

# Appendix B: Minor Watersheds or “Subwatersheds”

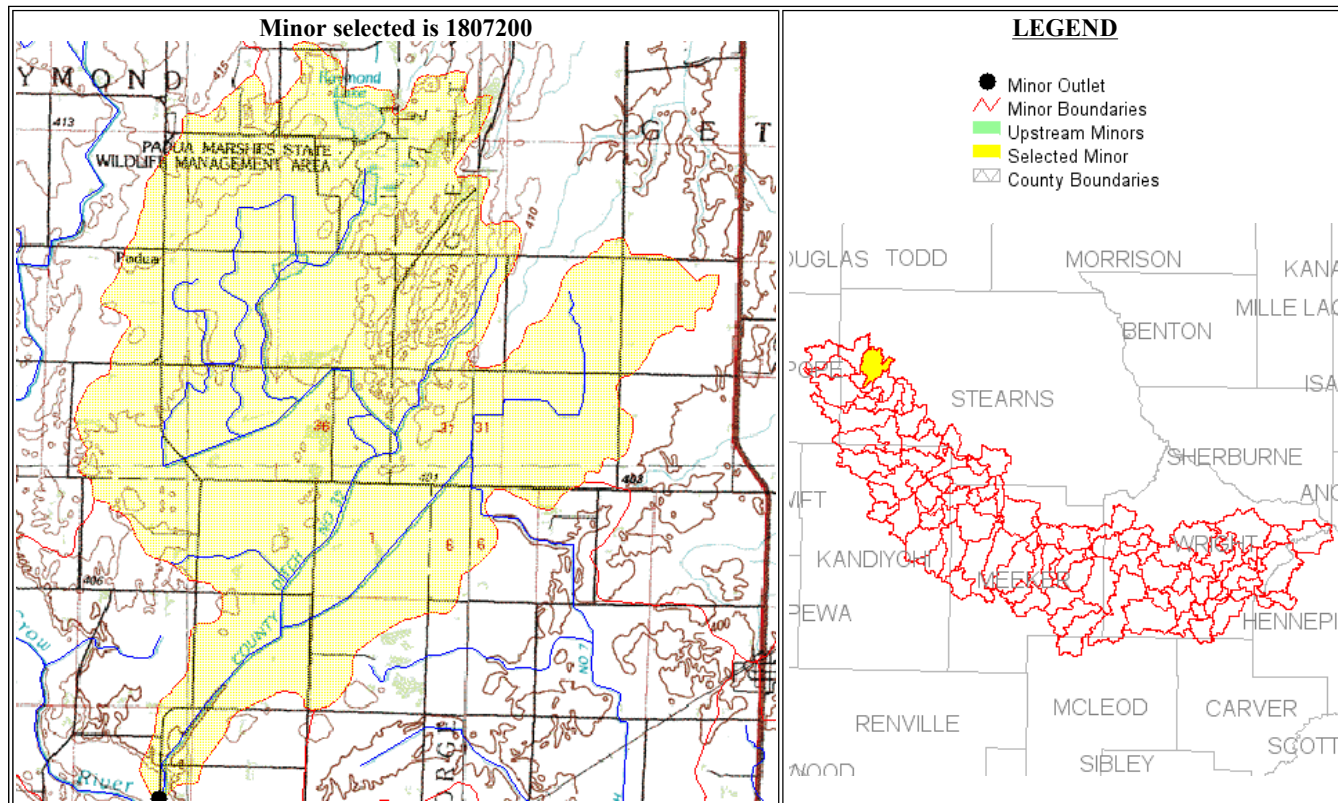
The North Fork Crow River Watershed is divided into 60 minor watersheds, commonly referred to as subwatersheds. These subwatersheds often refer to land that drains a smaller water body, such as a lake or drainage system. The North Fork Crow River Watershed District’s boundaries fall within 27 of these subwatersheds.

Appendix B contains information on the District’s 33 subwatersheds (as identified by the USGS), each identified with a seven-digit unique identifying number. The seven-digit number is based on the Minnesota Common Stream and Watershed Numbering System (Minnesota Department of Natural Resources, 1981). The first two digits are the same as the major watershed number. The following three digits are arbitrary and assigned by the MnDNR. The last two digits were added by the USGS Minnesota District, to identify additional subdivisions to the MnDNR's Minors at locations of USGS gaging stations and to identify noncontributing areas.



Results from Interactive Minor Web Page

- HOME
- BACK TO MAJOR PAGE
- BACK TO MINOR PAGE
- METADATA



**SELECTED MINOR (Highlighted in Yellow)**

<a href="#">Minor7</a>	<a href="#">Minor outlet description</a>	<a href="#">Outlet location (Township, Range, Section, Quarter, Quarter)</a>	<a href="#">Drainage Area for Selected Minor (Sq. Mi.)</a>	<a href="#">Lake Area (percent of drainage area)</a>	<a href="#">Storage Area (percent of drainage area)</a>
1807200	County Ditch No. 32 to North Fork Crow River	SE SE 15 124N 35W	18.05	1.4	16.5

**Cummulative Drainage Area Totals to Outlet of Selected Minor**

<a href="#">Drainage Area of Selected Minor (Sq. Mi.)</a>	<a href="#">Drainage Area of Upstream Minor/s (Sq. Mi.)</a>	<a href="#">Drainage Area of Upstream Major/s (Sq. Mi.)</a>	<a href="#">Total Drainage Area to the Outlet of the Selected Minor (Sq. Mi.)</a>
18.05	0	0	18.05

**Other Physical Characteristic Totals to Outlet of Selected Minor**

<a href="#">Lake Area (percent of total drainage area)</a>	<a href="#">Storage Area (percent of total drainage area)</a>	<a href="#">Main Channel Length (miles)</a>	<a href="#">Main Channel Slope (foot per mile)</a>
1.4	16.5	10.56	3.8

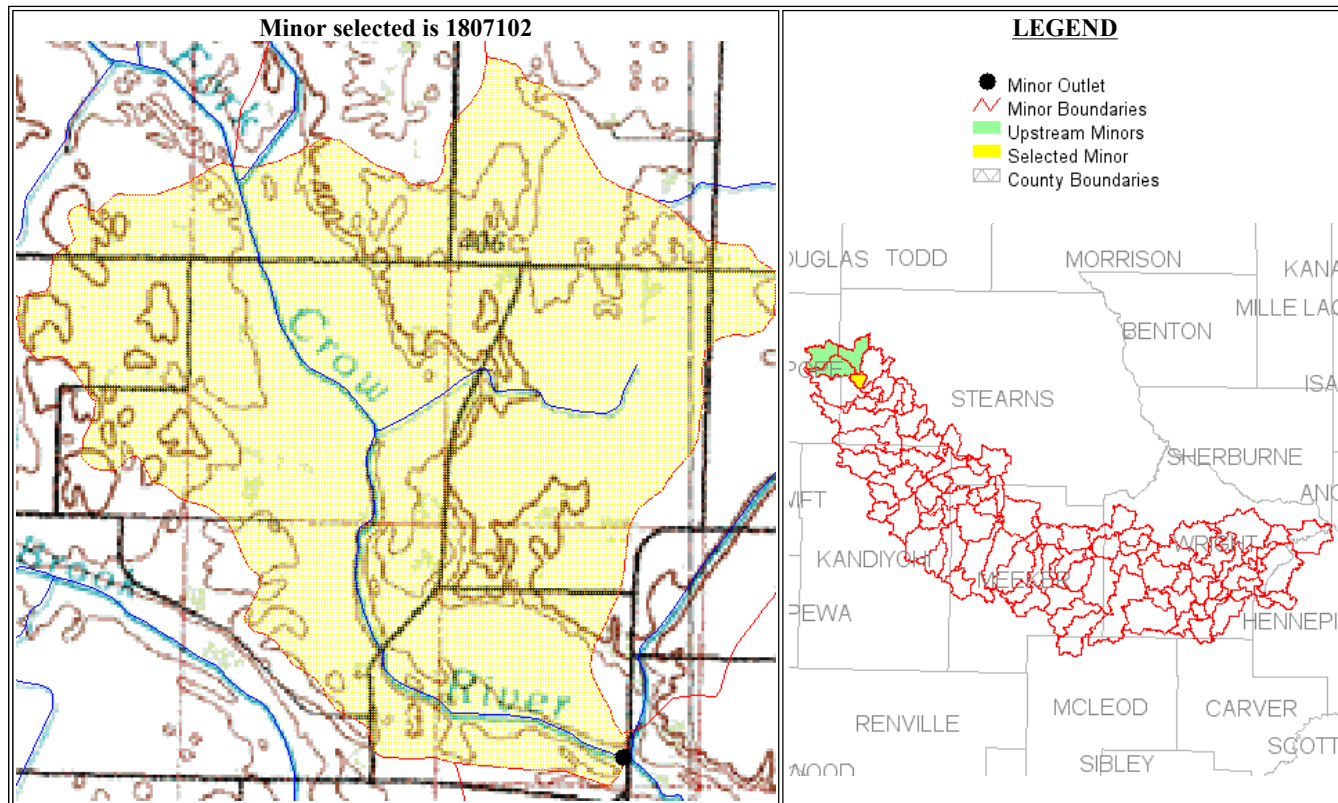
U.S. Department of the Interior, U.S. Geological Survey, Minnesota District  
 URL: <http://gisdmnsp1.cr.usgs.gov/watershed/index.htm>  
 Contact: [sanocki@usgs.gov](mailto:sanocki@usgs.gov)  
 Last Modified: September 19, 2003





Results from Interactive Minor Web Page

[HOME](#)
[BACK TO MAJOR PAGE](#)
[BACK TO MINOR PAGE](#)
[METADATA](#)



**SELECTED MINOR (Highlighted in Yellow)**

Minor7	Minor outlet description	Outlet location (Township, Range, Section, Quarter, Quarter)	Drainage Area for Selected Minor (Sq. Mi.)	Lake Area (percent of drainage area)	Storage Area (percent of drainage area)
1807102	North Fork Crow River above County Ditch No. 32	SW SE 15 124N 35W	4.56	0.0	11.4

**Cummulative Drainage Area Totals to Outlet of Selected Minor**

Drainage Area of Selected Minor (Sq. Mi.)	Drainage Area of Upstream Minor/s (Sq. Mi.)	Drainage Area of Upstream Major/s (Sq. Mi.)	Total Drainage Area to the Outlet of the Selected Minor (Sq. Mi.)
4.56	43.71	0	48.27

**Other Physical Characteristic Totals to Outlet of Selected Minor**

Lake Area (percent of total drainage area)	Storage Area (percent of total drainage area)	Main Channel Length (miles)	Main Channel Slope (foot per mile)
1.5	16.3	15.77	4.9

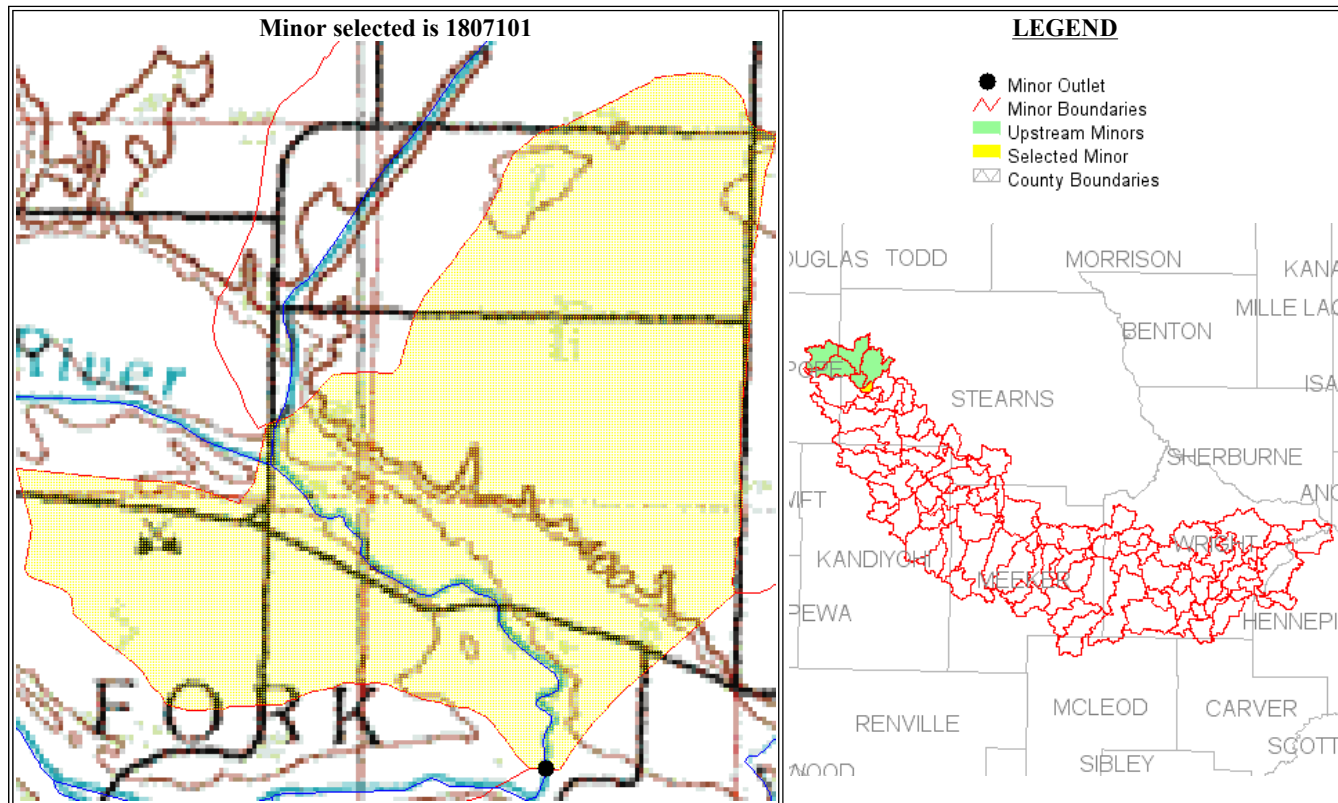
U.S. Department of the Interior, U.S. Geological Survey, Minnesota District  
 URL: <http://gisdmnspl.cr.usgs.gov/watershed/index.htm>  
 Contact: [sanocki@usgs.gov](mailto:sanocki@usgs.gov)  
 Last Modified: September 19, 2003





Results from Interactive Minor Web Page

- HOME**
- BACK TO MAJOR PAGE**
- BACK TO MINOR PAGE**
- METADATA**



**SELECTED MINOR (Highlighted in Yellow)**

<a href="#">Minor7</a>	<a href="#">Minor outlet description</a>	<a href="#">Outlet location (Township, Range, Section, Quarter, Quarter)</a>	<a href="#">Drainage Area for Selected Minor (Sq. Mi.)</a>	<a href="#">Lake Area (percent of drainage area)</a>	<a href="#">Storage Area (percent of drainage area)</a>
1807101	North Fork Crow River above Sedan Brook	SE SW 23 124N 35W	1.94	0.0	12.0

**Cummulative Drainage Area Totals to Outlet of Selected Minor**

<a href="#">Drainage Area of Selected Minor (Sq. Mi.)</a>	<a href="#">Drainage Area of Upstream Minor/s (Sq. Mi.)</a>	<a href="#">Drainage Area of Upstream Major/s (Sq. Mi.)</a>	<a href="#">Total Drainage Area to the Outlet of the Selected Minor (Sq. Mi.)</a>
1.94	66.32	0	68.25999999999999

**Other Physical Characteristic Totals to Outlet of Selected Minor**

<a href="#">Lake Area (percent of total drainage area)</a>	<a href="#">Storage Area (percent of total drainage area)</a>	<a href="#">Main Channel Length (miles)</a>	<a href="#">Main Channel Slope (foot per mile)</a>
1.4	16.2	17.24	4.9

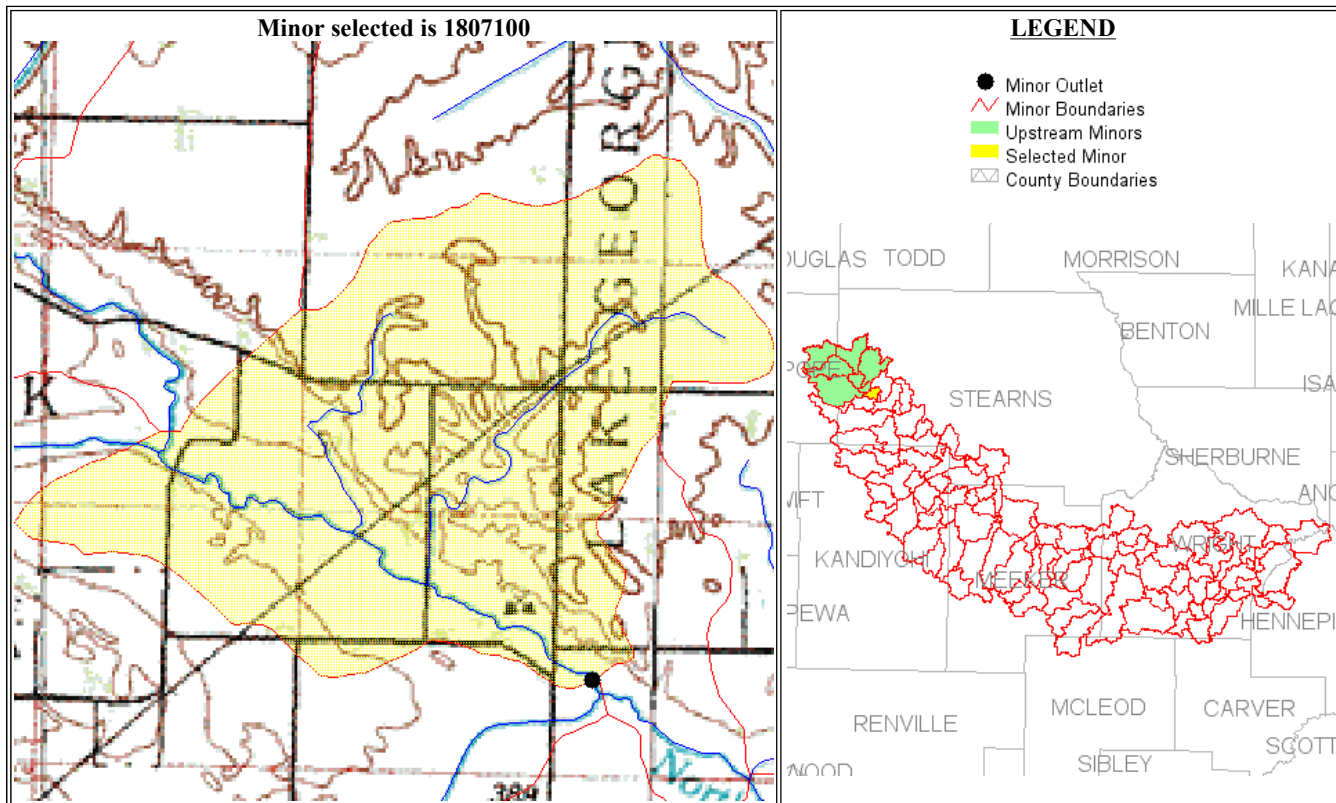
U.S. Department of the Interior, U.S. Geological Survey, Minnesota District  
 URL: <http://gisdmnspl.cr.usgs.gov/watershed/index.htm>  
 Contact: [sanocki@usgs.gov](mailto:sanocki@usgs.gov)  
 Last Modified: September 19, 2003





### Results from Interactive Minor Web Page

[HOME](#)
[BACK TO MAJOR PAGE](#)
[BACK TO MINOR PAGE](#)
[METADATA](#)



**SELECTED MINOR (Highlighted in Yellow)**

<a href="#">Minor7</a>	<a href="#">Minor outlet description</a>	<a href="#">Outlet location (Township, Range, Section, Quarter, Quarter)</a>	<a href="#">Drainage Area for Selected Minor (Sq. Mi.)</a>	<a href="#">Lake Area (percent of drainage area)</a>	<a href="#">Storage Area (percent of drainage area)</a>
1807100	North Fork Crow River above County Ditch No. 7	NW SW 30 124N 35W	3.16	0.0	8.9

**Cummulative Drainage Area Totals to Outlet of Selected Minor**

<a href="#">Drainage Area of Selected Minor (Sq. Mi.)</a>	<a href="#">Drainage Area of Upstream Minor/s (Sq. Mi.)</a>	<a href="#">Drainage Area of Upstream Major/s (Sq. Mi.)</a>	<a href="#">Total Drainage Area to the Outlet of the Selected Minor (Sq. Mi.)</a>
3.16	97.27	0	100.42999999999999

**Other Physical Characteristic Totals to Outlet of Selected Minor**

<a href="#">Lake Area (percent of total drainage area)</a>	<a href="#">Storage Area (percent of total drainage area)</a>	<a href="#">Main Channel Length (miles)</a>	<a href="#">Main Channel Slope (foot per mile)</a>
1.0	16.8	19.65	4.8

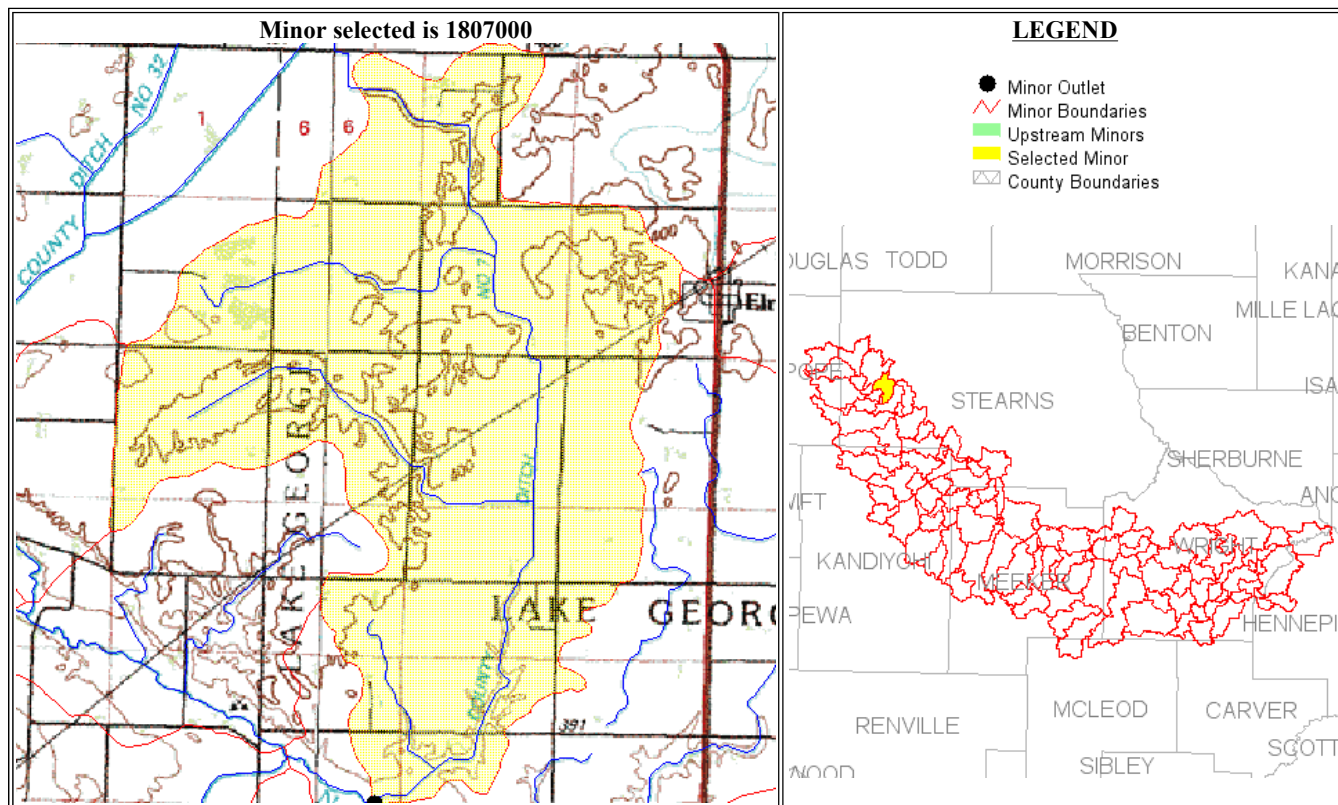
U.S. Department of the Interior, U.S. Geological Survey, Minnesota District  
 URL: <http://gisdmnspl.cr.usgs.gov/watershed/index.htm>  
 Contact: [sanocki@usgs.gov](mailto:sanocki@usgs.gov)  
 Last Modified: September 19, 2003





Results from Interactive Minor Web Page

[HOME](#)
[BACK TO MAJOR PAGE](#)
[BACK TO MINOR PAGE](#)
[METADATA](#)



**SELECTED MINOR (Highlighted in Yellow)**

Minor7	Minor outlet description	Outlet location (Township, Range, Section, Quarter, Quarter)	Drainage Area for Selected Minor (Sq. Mi.)	Lake Area (percent of drainage area)	Storage Area (percent of drainage area)
1807000	County Ditch No. 7 to North Fork Crow River	SE SE 30 124N 34W	9.93	0.0	6.1

**Cummulative Drainage Area Totals to Outlet of Selected Minor**

Drainage Area of Selected Minor (Sq. Mi.)	Drainage Area of Upstream Minor/s (Sq. Mi.)	Drainage Area of Upstream Major/s (Sq. Mi.)	Total Drainage Area to the Outlet of the Selected Minor (Sq. Mi.)
9.93	0	0	9.93

**Other Physical Characteristic Totals to Outlet of Selected Minor**

Lake Area (percent of total drainage area)	Storage Area (percent of total drainage area)	Main Channel Length (miles)	Main Channel Slope (foot per mile)
0.0	6.1	6.30	9.3

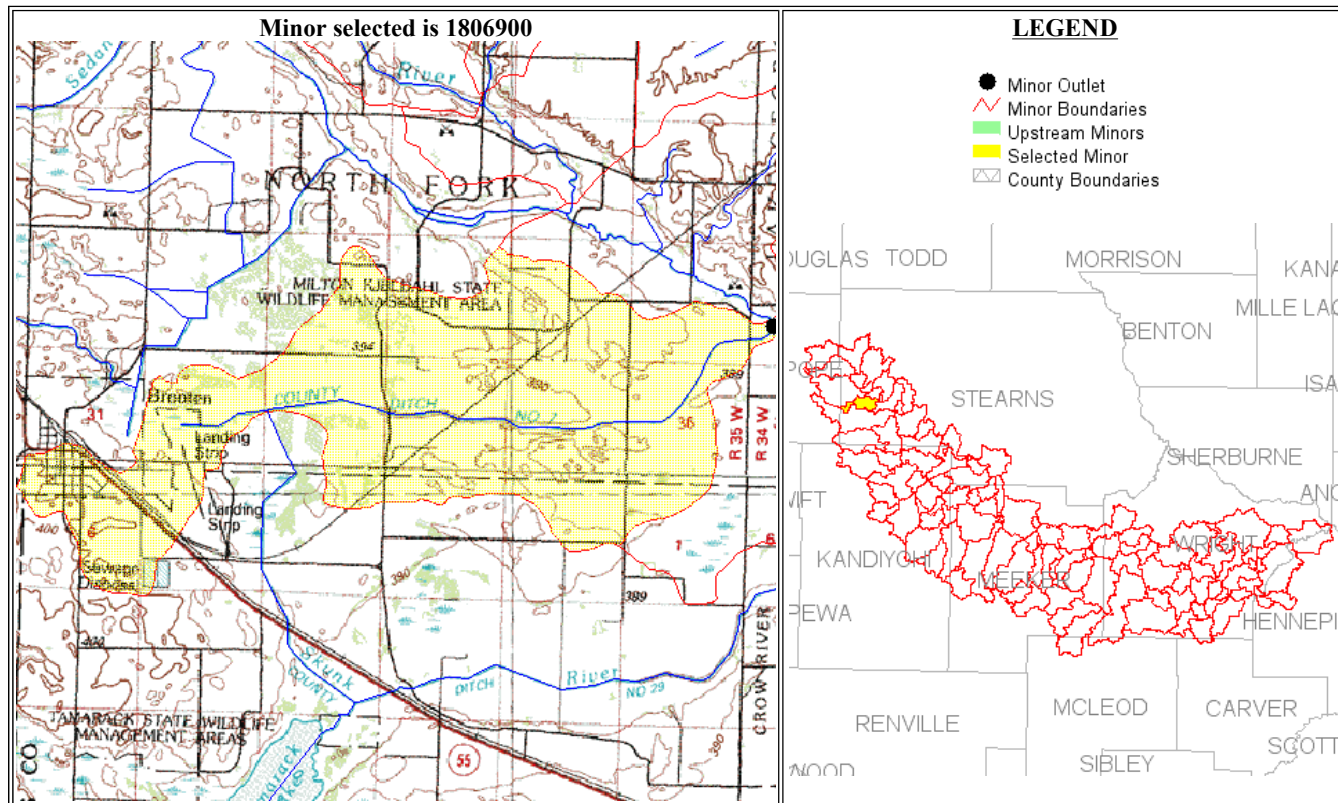
U.S. Department of the Interior, U.S. Geological Survey, Minnesota District  
 URL: <http://gisdmnspl.cr.usgs.gov/watershed/index.htm>  
 Contact: [sanocki@usgs.gov](mailto:sanocki@usgs.gov)  
 Last Modified: September 19, 2003





Results from Interactive Minor Web Page

[HOME](#)
[BACK TO MAJOR PAGE](#)
[BACK TO MINOR PAGE](#)
[METADATA](#)



**SELECTED MINOR (Highlighted in Yellow)**

Minor7	Minor outlet description	Outlet location (Township, Range, Section, Quarter, Quarter)	Drainage Area for Selected Minor (Sq. Mi.)	Lake Area (percent of drainage area)	Storage Area (percent of drainage area)
1806900	County Ditch No. 7 to North Fork Crow River	NW SW 30 124N 35W	8.37	0.0	18.3

**Cummulative Drainage Area Totals to Outlet of Selected Minor**

Drainage Area of Selected Minor (Sq. Mi.)	Drainage Area of Upstream Minor/s (Sq. Mi.)	Drainage Area of Upstream Major/s (Sq. Mi.)	Total Drainage Area to the Outlet of the Selected Minor (Sq. Mi.)
8.37	0	0	8.37

**Other Physical Characteristic Totals to Outlet of Selected Minor**

Lake Area (percent of total drainage area)	Storage Area (percent of total drainage area)	Main Channel Length (miles)	Main Channel Slope (foot per mile)
0.0	18.3	7.00	7.1

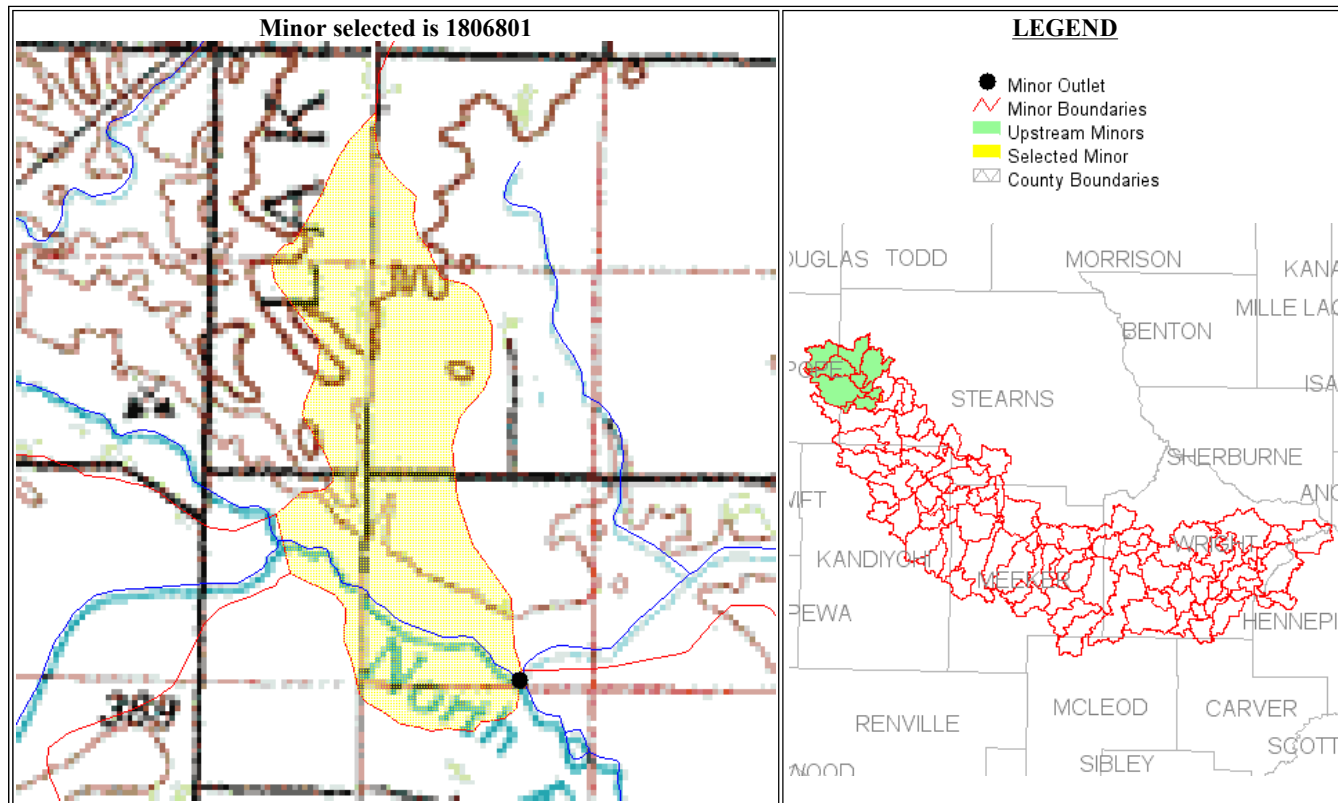
U.S. Department of the Interior, U.S. Geological Survey, Minnesota District  
 URL: <http://gisdmnspl.cr.usgs.gov/watershed/index.htm>  
 Contact: [sanocki@usgs.gov](mailto:sanocki@usgs.gov)  
 Last Modified: September 19, 2003





Results from Interactive Minor Web Page

[HOME](#)
[BACK TO MAJOR PAGE](#)
[BACK TO MINOR PAGE](#)
[METADATA](#)



**SELECTED MINOR (Highlighted in Yellow)**

<a href="#">Minor7</a>	<a href="#">Minor outlet description</a>	<a href="#">Outlet location (Township, Range, Section, Quarter, Quarter)</a>	<a href="#">Drainage Area for Selected Minor (Sq. Mi.)</a>	<a href="#">Lake Area (percent of drainage area)</a>	<a href="#">Storage Area (percent of drainage area)</a>
1806801	North Fork Crow River above County Ditch No. 7	SE SE 30 124N 34W	0.50	0.0	12.6

**Cummulative Drainage Area Totals to Outlet of Selected Minor**

<a href="#">Drainage Area of Selected Minor (Sq. Mi.)</a>	<a href="#">Drainage Area of Upstream Minor/s (Sq. Mi.)</a>	<a href="#">Drainage Area of Upstream Major/s (Sq. Mi.)</a>	<a href="#">Total Drainage Area to the Outlet of the Selected Minor (Sq. Mi.)</a>
0.50	108.8	0	109.3

**Other Physical Characteristic Totals to Outlet of Selected Minor**

<a href="#">Lake Area (percent of total drainage area)</a>	<a href="#">Storage Area (percent of total drainage area)</a>	<a href="#">Main Channel Length (miles)</a>	<a href="#">Main Channel Slope (foot per mile)</a>
0.9	16.9	20.47	4.8

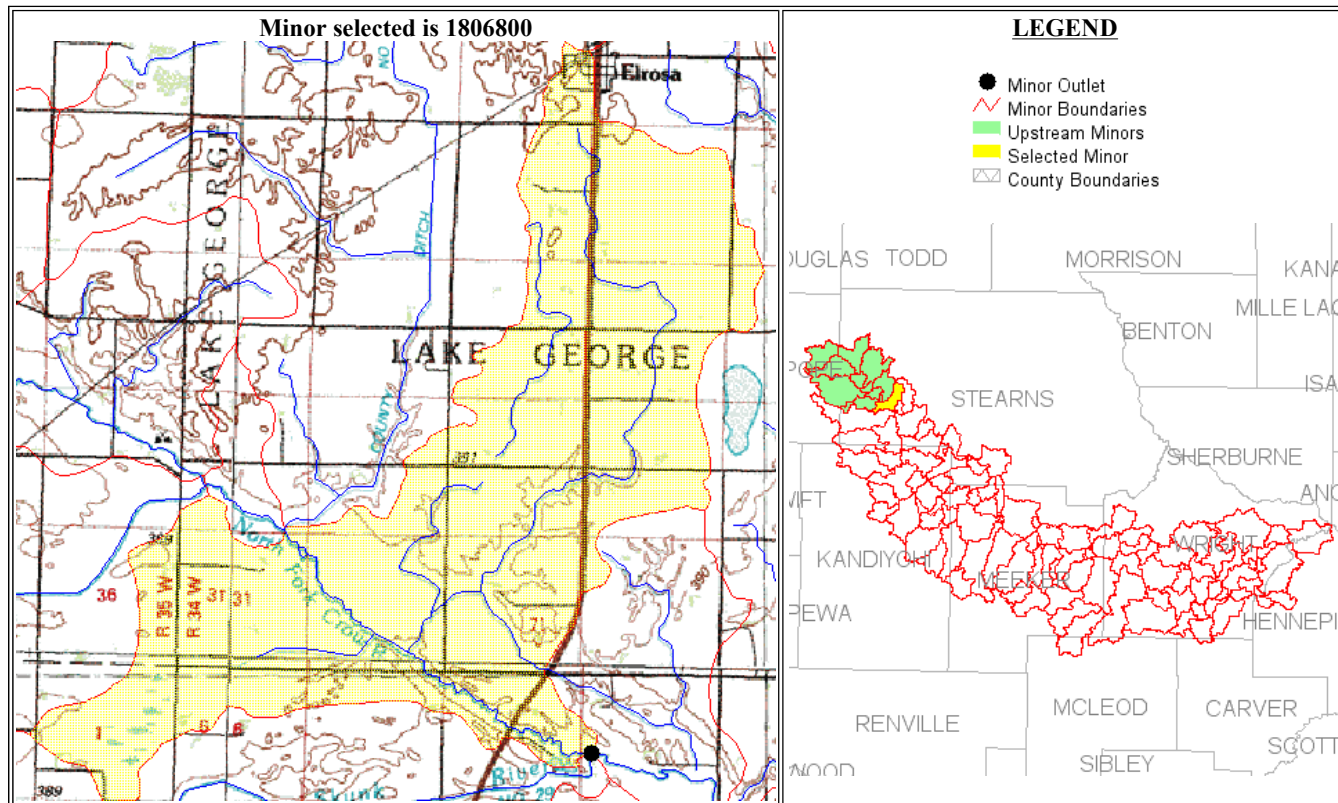
U.S. Department of the Interior, U.S. Geological Survey, Minnesota District  
 URL: <http://gisdmnspl.cr.usgs.gov/watershed/index.htm>  
 Contact: [sanocki@usgs.gov](mailto:sanocki@usgs.gov)  
 Last Modified: September 19, 2003





Results from Interactive Minor Web Page

- HOME
- BACK TO MAJOR PAGE
- BACK TO MINOR PAGE
- METADATA



**SELECTED MINOR (Highlighted in Yellow)**

<a href="#">Minor7</a>	<a href="#">Minor outlet description</a>	<a href="#">Outlet location (Township, Range, Section, Quarter, Quarter)</a>	<a href="#">Drainage Area for Selected Minor (Sq. Mi.)</a>	<a href="#">Lake Area (percent of drainage area)</a>	<a href="#">Storage Area (percent of drainage area)</a>
1806800	North Fork Crow River above Skunk River	NW SW 03 123N 34W	10.13	0.0	13.8

**Cummulative Drainage Area Totals to Outlet of Selected Minor**

<a href="#">Drainage Area of Selected Minor (Sq. Mi.)</a>	<a href="#">Drainage Area of Upstream Minor/s (Sq. Mi.)</a>	<a href="#">Drainage Area of Upstream Major/s (Sq. Mi.)</a>	<a href="#">Total Drainage Area to the Outlet of the Selected Minor (Sq. Mi.)</a>
10.13	119.23	0	129.36

**Other Physical Characteristic Totals to Outlet of Selected Minor**

<a href="#">Lake Area (percent of total drainage area)</a>	<a href="#">Storage Area (percent of total drainage area)</a>	<a href="#">Main Channel Length (miles)</a>	<a href="#">Main Channel Slope (foot per mile)</a>
0.8	15.8	24.00	4.6

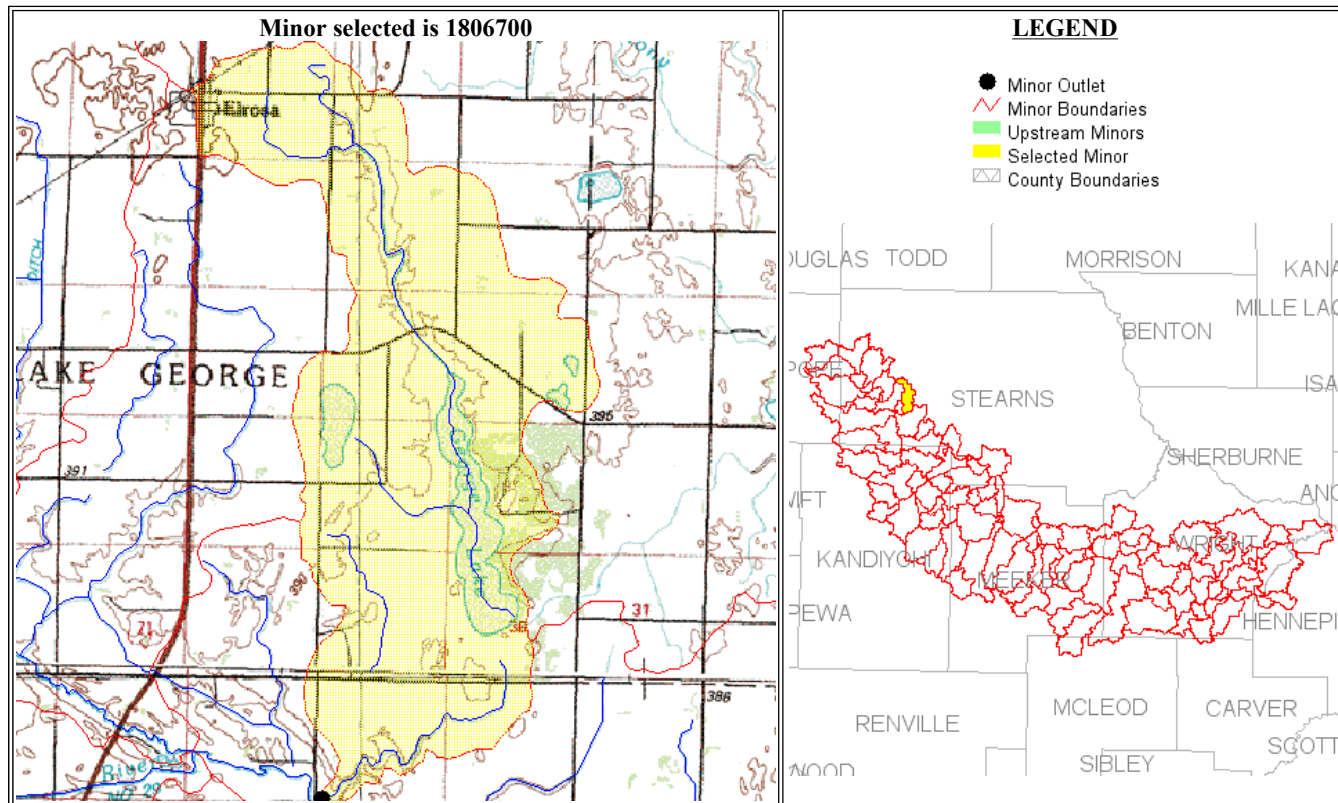
U.S. Department of the Interior, U.S. Geological Survey, Minnesota District  
 URL: <http://gisdmnspl.cr.usgs.gov/watershed/index.htm>  
 Contact: [sanocki@usgs.gov](mailto:sanocki@usgs.gov)  
 Last Modified: September 19, 2003





Results from Interactive Minor Web Page

[HOME](#)
[BACK TO MAJOR PAGE](#)
[BACK TO MINOR PAGE](#)
[METADATA](#)



**SELECTED MINOR (Highlighted in Yellow)**

Minor7	Minor outlet description	Outlet location (Township, Range, Section, Quarter, Quarter)	Drainage Area for Selected Minor (Sq. Mi.)	Lake Area (percent of drainage area)	Storage Area (percent of drainage area)
1806700	Unnamed tributary to North Fork Crow River	NE SE 25 123N 34W	8.89	5.5	16.1

**Cummulative Drainage Area Totals to Outlet of Selected Minor**

Drainage Area of Selected Minor (Sq. Mi.)	Drainage Area of Upstream Minor/s (Sq. Mi.)	Drainage Area of Upstream Major/s (Sq. Mi.)	Total Drainage Area to the Outlet of the Selected Minor (Sq. Mi.)
8.89	0	0	8.89

**Other Physical Characteristic Totals to Outlet of Selected Minor**

Lake Area (percent of total drainage area)	Storage Area (percent of total drainage area)	Main Channel Length (miles)	Main Channel Slope (foot per mile)
5.5	16.1	8.46	5.4

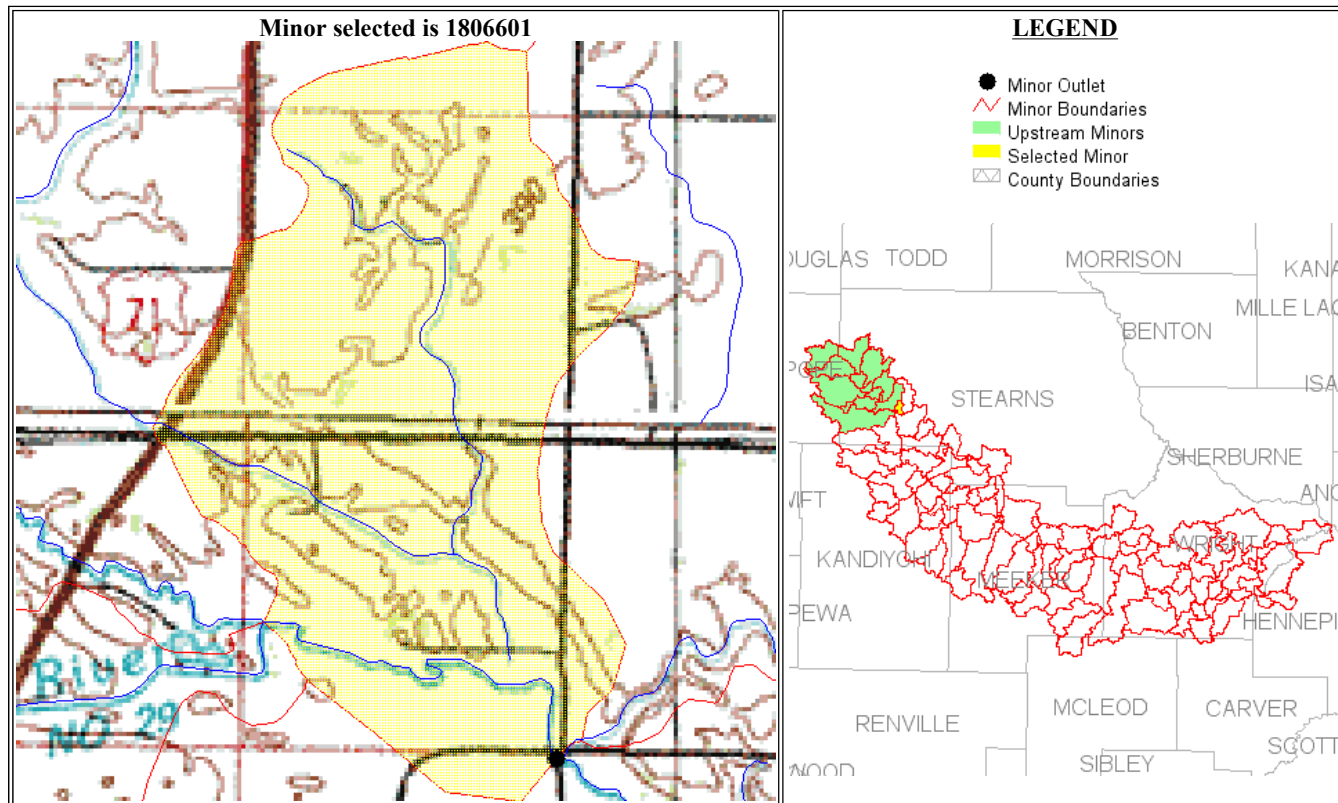
U.S. Department of the Interior, U.S. Geological Survey, Minnesota District  
 URL: <http://gisdmnspl.cr.usgs.gov/watershed/index.htm>  
 Contact: [sanocki@usgs.gov](mailto:sanocki@usgs.gov)  
 Last Modified: September 19, 2003





Results from Interactive Minor Web Page

[HOME](#)
[BACK TO MAJOR PAGE](#)
[BACK TO MINOR PAGE](#)
[METADATA](#)



**SELECTED MINOR (Highlighted in Yellow)**

Minor7	Minor outlet description	Outlet location (Township, Range, Section, Quarter, Quarter)	Drainage Area for Selected Minor (Sq. Mi.)	Lake Area (percent of drainage area)	Storage Area (percent of drainage area)
1806601	North Fork Crow River above gaging station near Georgeville: station number is 05275970	SE SE 03 123N 34W	2.17	0.0	8.6

**Cummulative Drainage Area Totals to Outlet of Selected Minor**

Drainage Area of Selected Minor (Sq. Mi.)	Drainage Area of Upstream Minor/s (Sq. Mi.)	Drainage Area of Upstream Major/s (Sq. Mi.)	Total Drainage Area to the Outlet of the Selected Minor (Sq. Mi.)
2.17	162.69	0	164.85999999999998

**Other Physical Characteristic Totals to Outlet of Selected Minor**

Lake Area (percent of total drainage area)	Storage Area (percent of total drainage area)	Main Channel Length (miles)	Main Channel Slope (foot per mile)
0.8	16.7	25.35	4.7

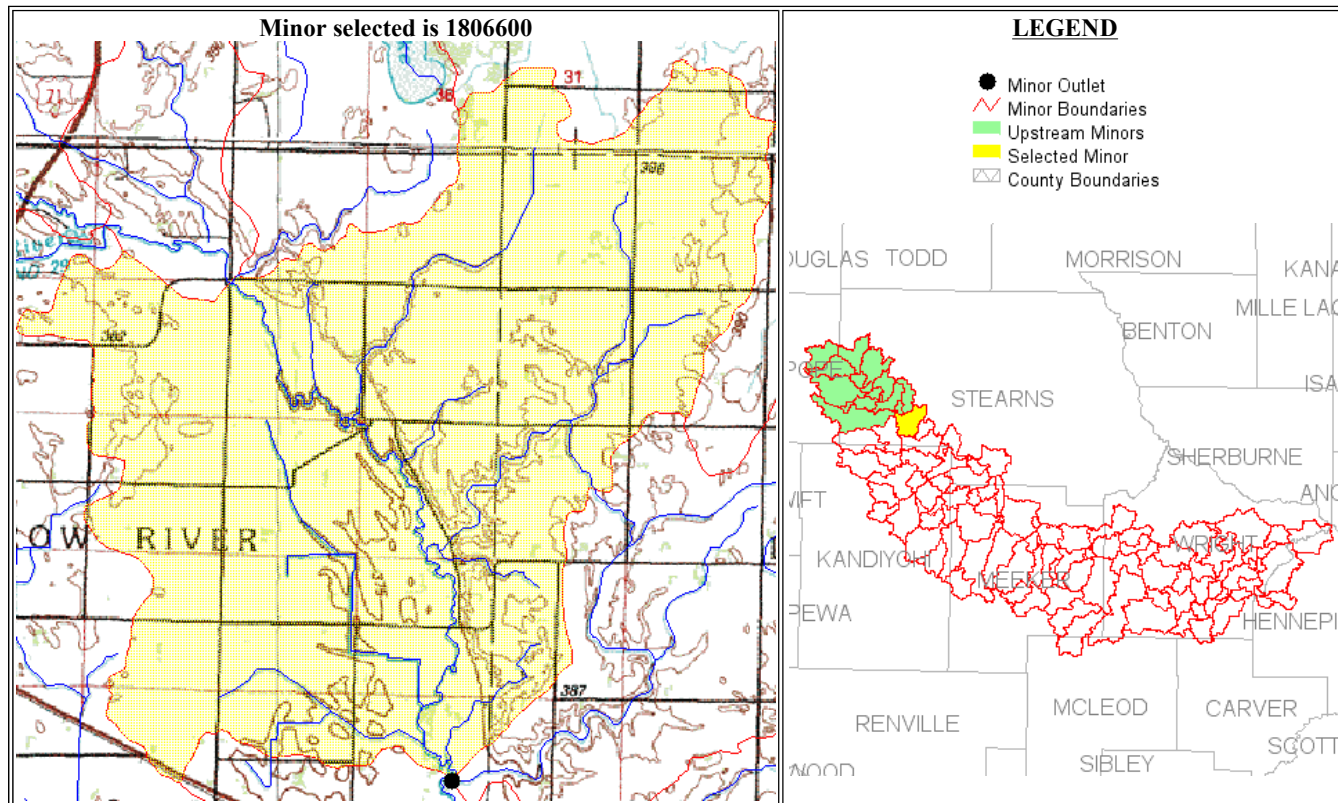
U.S. Department of the Interior, U.S. Geological Survey, Minnesota District  
 URL: <http://gisdmnspl.cr.usgs.gov/watershed/index.htm>  
 Contact: [sanocki@usgs.gov](mailto:sanocki@usgs.gov)  
 Last Modified: September 19, 2003





Results from Interactive Minor Web Page

[HOME](#)
[BACK TO MAJOR PAGE](#)
[BACK TO MINOR PAGE](#)
[METADATA](#)



**SELECTED MINOR (Highlighted in Yellow)**

<a href="#">Minor7</a>	<a href="#">Minor outlet description</a>	<a href="#">Outlet location (Township, Range, Section, Quarter, Quarter)</a>	<a href="#">Drainage Area for Selected Minor (Sq. Mi.)</a>	<a href="#">Lake Area (percent of drainage area)</a>	<a href="#">Storage Area (percent of drainage area)</a>
1806600	North Fork Crow River above unnamed tributary subbasin 1806500	NW SE 25 123N 34W	16.50	0.0	16.9

**Cummulative Drainage Area Totals to Outlet of Selected Minor**

<a href="#">Drainage Area of Selected Minor (Sq. Mi.)</a>	<a href="#">Drainage Area of Upstream Minor/s (Sq. Mi.)</a>	<a href="#">Drainage Area of Upstream Major/s (Sq. Mi.)</a>	<a href="#">Total Drainage Area to the Outlet of the Selected Minor (Sq. Mi.)</a>
16.50	173.75	0	190.25

**Other Physical Characteristic Totals to Outlet of Selected Minor**

<a href="#">Lake Area (percent of total drainage area)</a>	<a href="#">Storage Area (percent of total drainage area)</a>	<a href="#">Main Channel Length (miles)</a>	<a href="#">Main Channel Slope (foot per mile)</a>
1.0	16.7	31.43	4.6

U.S. Department of the Interior, U.S. Geological Survey, Minnesota District  
 URL: <http://gisdmnspl.cr.usgs.gov/watershed/index.htm>  
 Contact: [sanocki@usgs.gov](mailto:sanocki@usgs.gov)  
 Last Modified: September 19, 2003





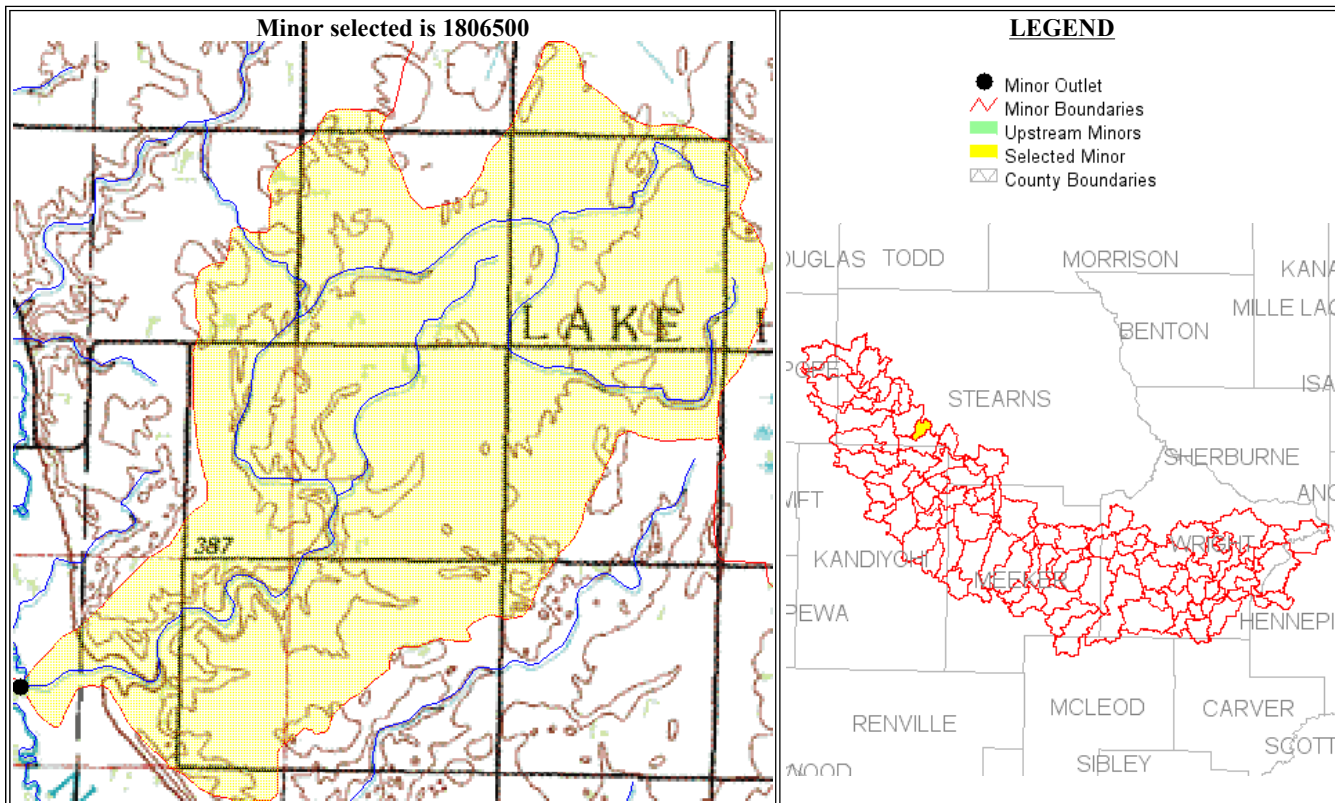
### Results from Interactive Minor Web Page

[HOME](#)

[BACK TO MAJOR PAGE](#)

[BACK TO MINOR PAGE](#)

[METADATA](#)



**SELECTED MINOR (Highlighted in Yellow)**

Minor7	Minor outlet description	Outlet location (Township, Range, Section, Quarter, Quarter)	Drainage Area for Selected Minor (Sq. Mi.)	Lake Area (percent of drainage area)	Storage Area (percent of drainage area)
1806500	Unnamed tributary to North Fork Crow River	NW SE 25 123N 34W	6.09	0.0	3.7

**Cummulative Drainage Area Totals to Outlet of Selected Minor**

Drainage Area of Selected Minor (Sq. Mi.)	Drainage Area of Upstream Minor/s (Sq. Mi.)	Drainage Area of Upstream Major/s (Sq. Mi.)	Total Drainage Area to the Outlet of the Selected Minor (Sq. Mi.)
6.09	0	0	6.09

**Other Physical Characteristic Totals to Outlet of Selected Minor**

Lake Area (percent of total drainage area)	Storage Area (percent of total drainage area)	Main Channel Length (miles)	Main Channel Slope (foot per mile)
0.0	3.7	7.55	7.7

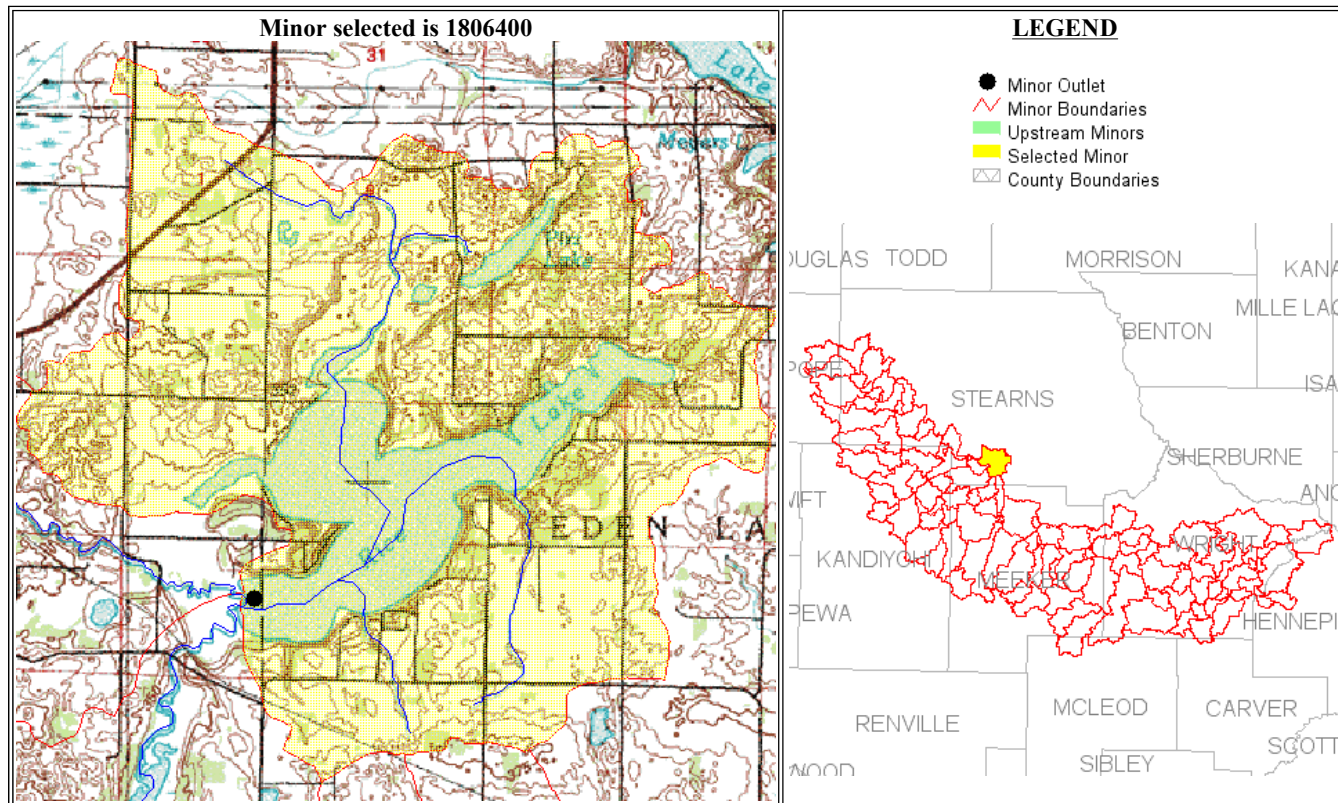
U.S. Department of the Interior, U.S. Geological Survey, Minnesota District  
 URL: <http://gisdmnspl.cr.usgs.gov/watershed/index.htm>  
 Contact: [sanocki@usgs.gov](mailto:sanocki@usgs.gov)  
 Last Modified: September 19, 2003





Results from Interactive Minor Web Page

- HOME
- BACK TO MAJOR PAGE
- BACK TO MINOR PAGE
- METADATA



**SELECTED MINOR (Highlighted in Yellow)**

<a href="#">Minor7</a>	<a href="#">Minor outlet description</a>	<a href="#">Outlet location (Township, Range, Section, Quarter, Quarter)</a>	<a href="#">Drainage Area for Selected Minor (Sq. Mi.)</a>	<a href="#">Lake Area (percent of drainage area)</a>	<a href="#">Storage Area (percent of drainage area)</a>
1806400	Rice Lake outlet to North Fork Crow River	NE SE 24 122N 32W	16.08	15.3	25.8

**Cummulative Drainage Area Totals to Outlet of Selected Minor**

<a href="#">Drainage Area of Selected Minor (Sq. Mi.)</a>	<a href="#">Drainage Area of Upstream Minor/s (Sq. Mi.)</a>	<a href="#">Drainage Area of Upstream Major/s (Sq. Mi.)</a>	<a href="#">Total Drainage Area to the Outlet of the Selected Minor (Sq. Mi.)</a>
16.08	0	0	16.08

**Other Physical Characteristic Totals to Outlet of Selected Minor**

<a href="#">Lake Area (percent of total drainage area)</a>	<a href="#">Storage Area (percent of total drainage area)</a>	<a href="#">Main Channel Length (miles)</a>	<a href="#">Main Channel Slope (foot per mile)</a>
15.3	25.8	6.12	11.8

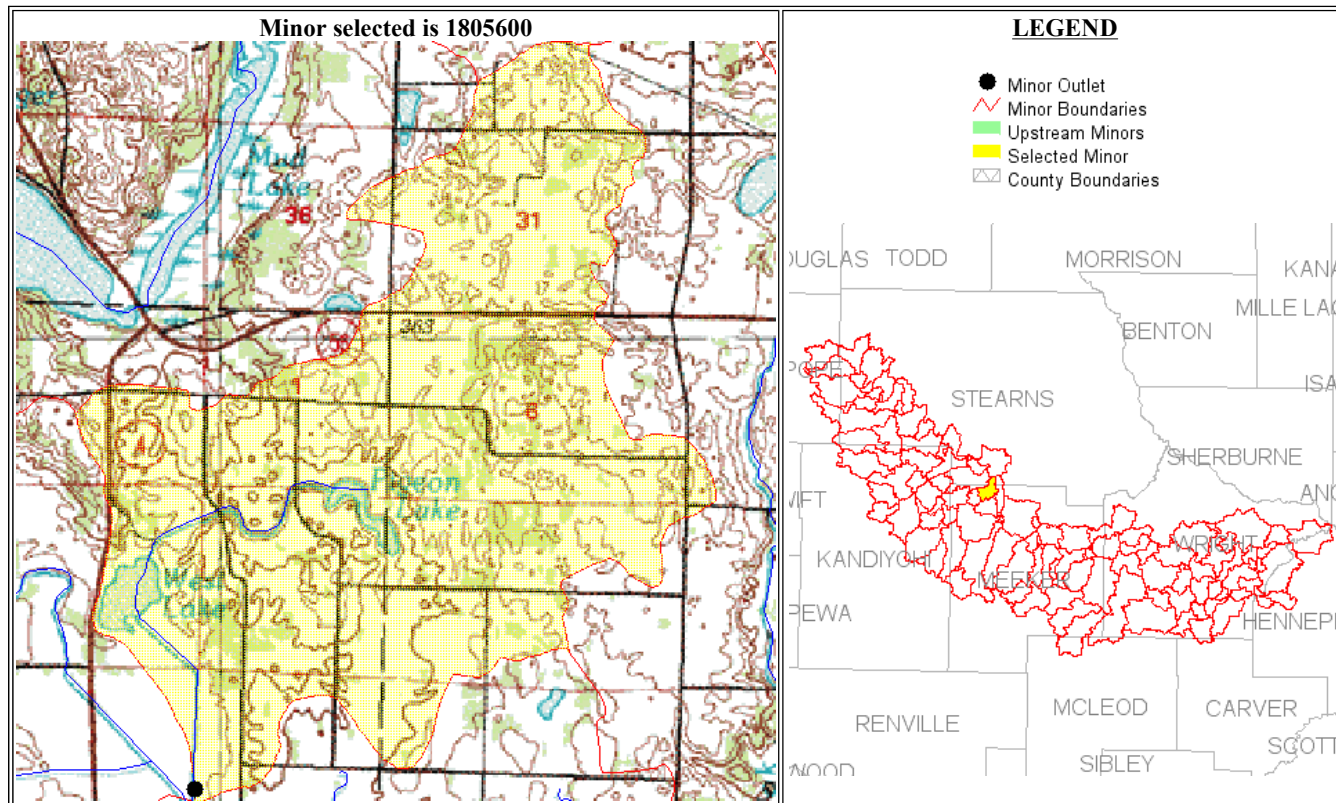
U.S. Department of the Interior, U.S. Geological Survey, Minnesota District  
 URL: <http://gisdmnspl.cr.usgs.gov/watershed/index.htm>  
 Contact: [sanocki@usgs.gov](mailto:sanocki@usgs.gov)  
 Last Modified: September 19, 2003





Results from Interactive Minor Web Page

[HOME](#)
[BACK TO MAJOR PAGE](#)
[BACK TO MINOR PAGE](#)
[METADATA](#)



**SELECTED MINOR (Highlighted in Yellow)**

Minor7	Minor outlet description	Outlet location (Township, Range, Section, Quarter, Quarter)	Drainage Area for Selected Minor (Sq. Mi.)	Lake Area (percent of drainage area)	Storage Area (percent of drainage area)
1805600	Unnamed ditch to North fork Crow River	SE SE 14 121N 31W	6.98	1.7	19.7

**Cummulative Drainage Area Totals to Outlet of Selected Minor**

Drainage Area of Selected Minor (Sq. Mi.)	Drainage Area of Upstream Minor/s (Sq. Mi.)	Drainage Area of Upstream Major/s (Sq. Mi.)	Total Drainage Area to the Outlet of the Selected Minor (Sq. Mi.)
6.98	0	0	6.98

**Other Physical Characteristic Totals to Outlet of Selected Minor**

Lake Area (percent of total drainage area)	Storage Area (percent of total drainage area)	Main Channel Length (miles)	Main Channel Slope (foot per mile)
1.7	19.7	6.25	15.4

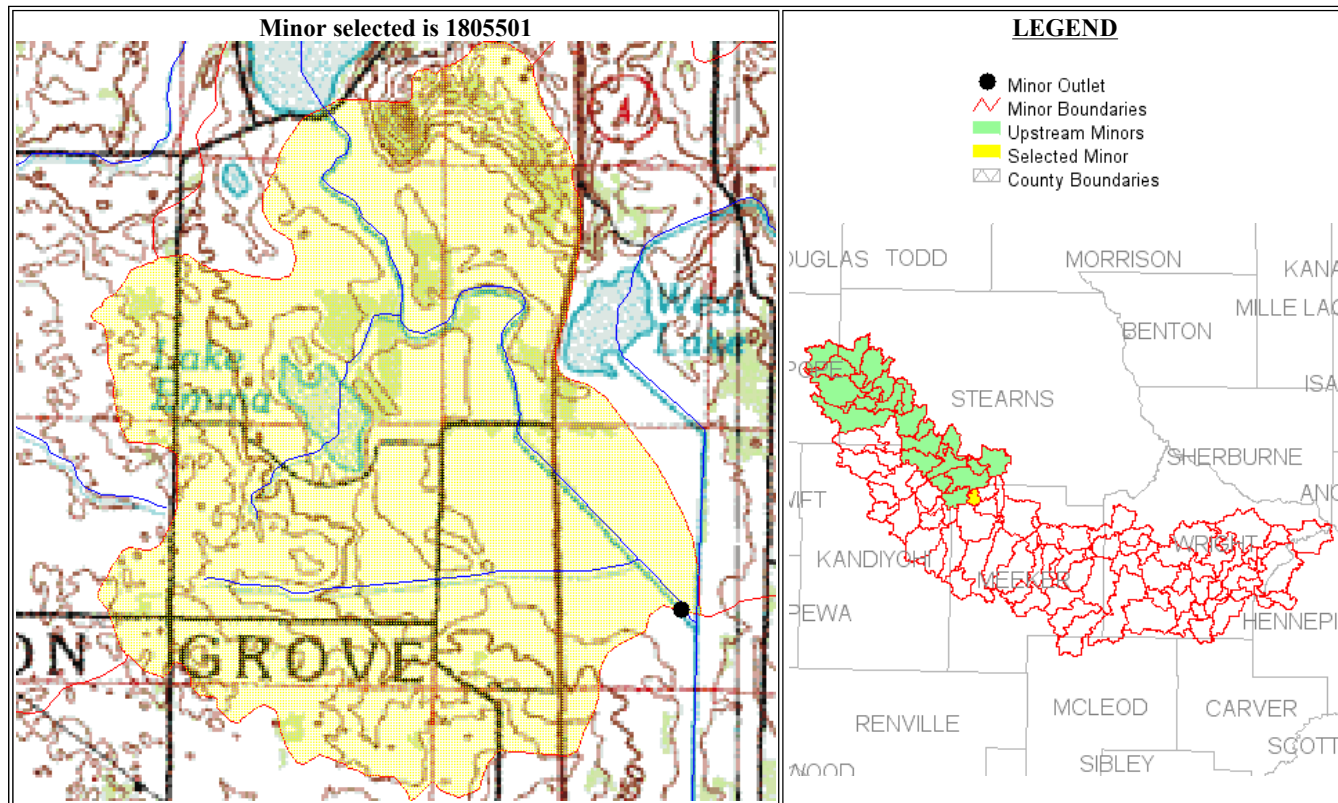
U.S. Department of the Interior, U.S. Geological Survey, Minnesota District  
 URL: <http://gisdmnspl.cr.usgs.gov/watershed/index.htm>  
 Contact: [sanocki@usgs.gov](mailto:sanocki@usgs.gov)  
 Last Modified: September 19, 2003





Results from Interactive Minor Web Page

[HOME](#)
[BACK TO MAJOR PAGE](#)
[BACK TO MINOR PAGE](#)
[METADATA](#)



**SELECTED MINOR (Highlighted in Yellow)**

Minor7	Minor outlet description	Outlet location (Township, Range, Section, Quarter, Quarter)	Drainage Area for Selected Minor (Sq. Mi.)	Lake Area (percent of drainage area)	Storage Area (percent of drainage area)
1805501	North Fork Crow River above Unnamed tributary subbasin 1805600	SE SE 14 121N 32W	4.19	2.2	18.6

**Cummulative Drainage Area Totals to Outlet of Selected Minor**

Drainage Area of Selected Minor (Sq. Mi.)	Drainage Area of Upstream Minor/s (Sq. Mi.)	Drainage Area of Upstream Major/s (Sq. Mi.)	Total Drainage Area to the Outlet of the Selected Minor (Sq. Mi.)
4.19	311.32	0	315.51

**Other Physical Characteristic Totals to Outlet of Selected Minor**

Lake Area (percent of total drainage area)	Storage Area (percent of total drainage area)	Main Channel Length (miles)	Main Channel Slope (foot per mile)
3.0	18.5	60.46	4.2

U.S. Department of the Interior, U.S. Geological Survey, Minnesota District  
 URL: <http://gisdmnspl.cr.usgs.gov/watershed/index.htm>  
 Contact: [sanocki@usgs.gov](mailto:sanocki@usgs.gov)  
 Last Modified: September 19, 2003





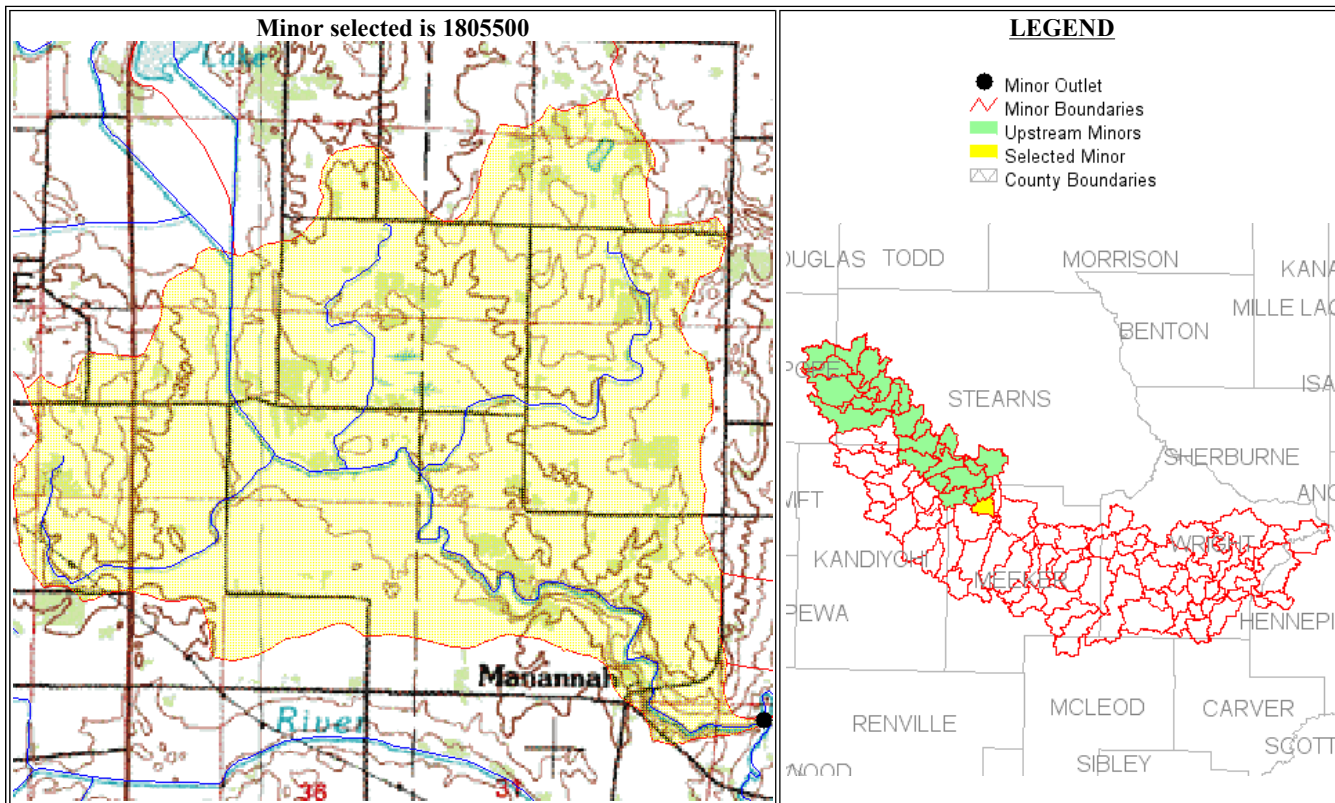
### Results from Interactive Minor Web Page

[HOME](#)

[BACK TO MAJOR PAGE](#)

[BACK TO MINOR PAGE](#)

[METADATA](#)



**SELECTED MINOR (Highlighted in Yellow)**

<a href="#">Minor7</a>	<a href="#">Minor outlet description</a>	<a href="#">Outlet location (Township, Range, Section, Quarter, Quarter)</a>	<a href="#">Drainage Area for Selected Minor (Sq. Mi.)</a>	<a href="#">Lake Area (percent of drainage area)</a>	<a href="#">Storage Area (percent of drainage area)</a>
1805500	North Fork Crow River above Middle Fork Crow River	NE NW 32 121N 31W	8.00	0.0	17.0

**Cummulative Drainage Area Totals to Outlet of Selected Minor**

<a href="#">Drainage Area of Selected Minor (Sq. Mi.)</a>	<a href="#">Drainage Area of Upstream Minor/s (Sq. Mi.)</a>	<a href="#">Drainage Area of Upstream Major/s (Sq. Mi.)</a>	<a href="#">Total Drainage Area to the Outlet of the Selected Minor (Sq. Mi.)</a>
8.00	322.49	0	330.49

**Other Physical Characteristic Totals to Outlet of Selected Minor**

<a href="#">Lake Area (percent of total drainage area)</a>	<a href="#">Storage Area (percent of total drainage area)</a>	<a href="#">Main Channel Length (miles)</a>	<a href="#">Main Channel Slope (foot per mile)</a>
2.9	18.5	66.03	3.9

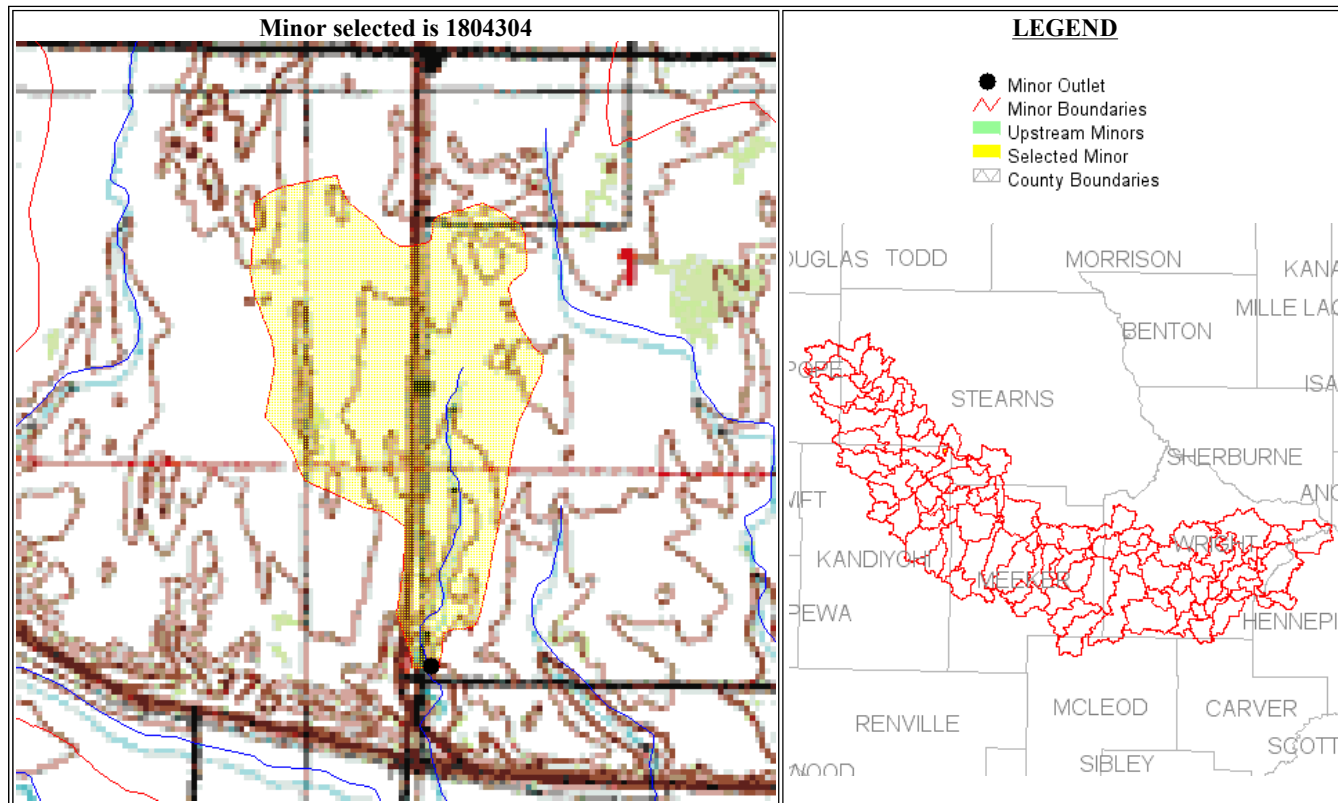
U.S. Department of the Interior, U.S. Geological Survey, Minnesota District  
 URL: <http://gisdmnsp1.cr.usgs.gov/watershed/index.htm>  
 Contact: [sanocki@usgs.gov](mailto:sanocki@usgs.gov)  
 Last Modified: September 19, 2003





Results from Interactive Minor Web Page

[HOME](#)
[BACK TO MAJOR PAGE](#)
[BACK TO MINOR PAGE](#)
[METADATA](#)



**SELECTED MINOR (Highlighted in Yellow)**

Minor7	Minor outlet description	Outlet location (Township, Range, Section, Quarter, Quarter)	Drainage Area for Selected Minor (Sq. Mi.)	Lake Area (percent of drainage area)	Storage Area (percent of drainage area)
1804304	Unnamed tributary to North Fork Crow River above gaging station near Paynesville: station number is 05276100	SW NW 12 122N 33W	0.49	0.0	8.4

**Cummulative Drainage Area Totals to Outlet of Selected Minor**

Drainage Area of Selected Minor (Sq. Mi.)	Drainage Area of Upstream Minor/s (Sq. Mi.)	Drainage Area of Upstream Major/s (Sq. Mi.)	Total Drainage Area to the Outlet of the Selected Minor (Sq. Mi.)
0.49	0	0	0.49

**Other Physical Characteristic Totals to Outlet of Selected Minor**

Lake Area (percent of total drainage area)	Storage Area (percent of total drainage area)	Main Channel Length (miles)	Main Channel Slope (foot per mile)
0.0	8.4	1.11	44.4

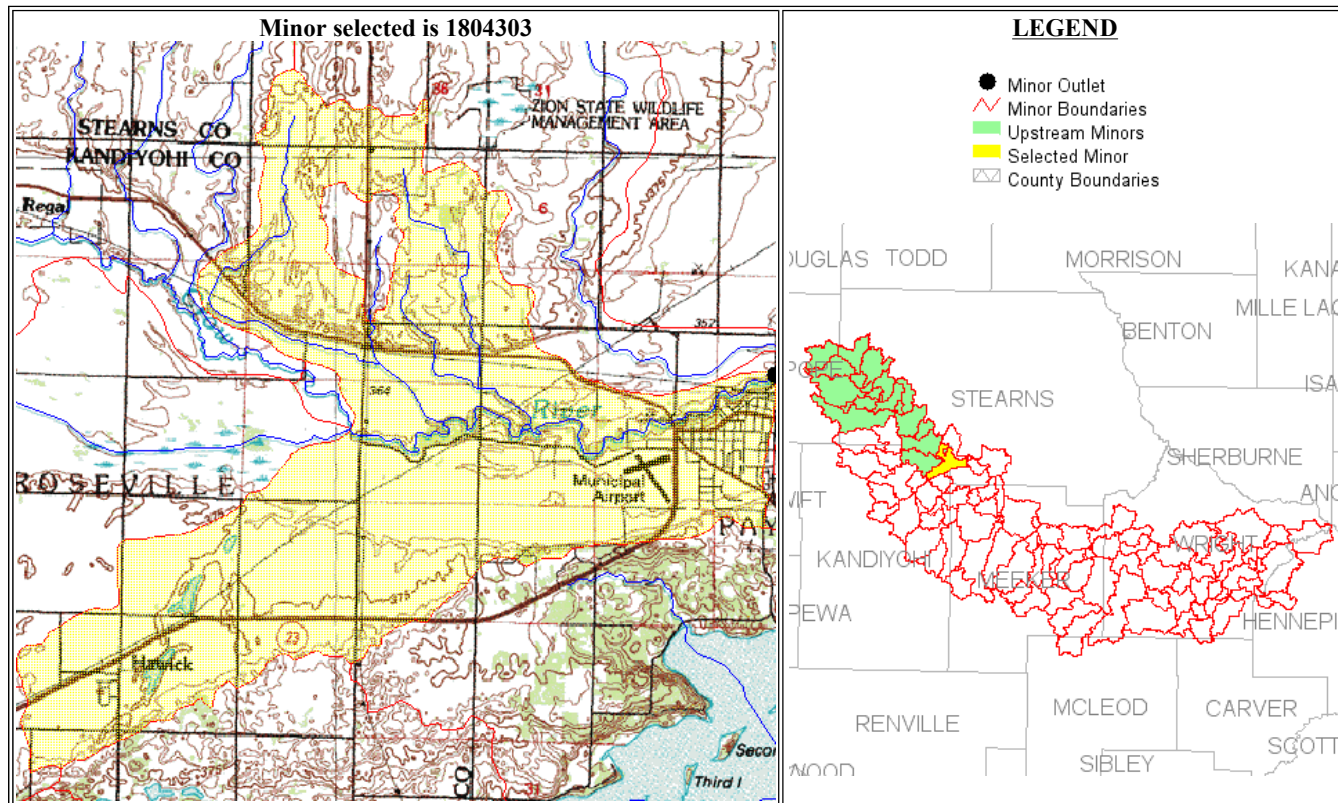
U.S. Department of the Interior, U.S. Geological Survey, Minnesota District  
 URL: <http://gisdmnspl.cr.usgs.gov/watershed/index.htm>  
 Contact: [sanocki@usgs.gov](mailto:sanocki@usgs.gov)  
 Last Modified: September 19, 2003





Results from Interactive Minor Web Page

[HOME](#)
[BACK TO MAJOR PAGE](#)
[BACK TO MINOR PAGE](#)
[METADATA](#)



**SELECTED MINOR (Highlighted in Yellow)**

Minor7	Minor outlet description	Outlet location (Township, Range, Section, Quarter, Quarter)	Drainage Area for Selected Minor (Sq. Mi.)	Lake Area (percent of drainage area)	Storage Area (percent of drainage area)
1804303	North Fork Crow River above gaging station at Paynesville: station number is 05276200	SE SW 09 122N 32W	14.02	0.3	11.9

**Cummulative Drainage Area Totals to Outlet of Selected Minor**

Drainage Area of Selected Minor (Sq. Mi.)	Drainage Area of Upstream Minor/s (Sq. Mi.)	Drainage Area of Upstream Major/s (Sq. Mi.)	Total Drainage Area to the Outlet of the Selected Minor (Sq. Mi.)
14.02	229.13	0	243.15

**Other Physical Characteristic Totals to Outlet of Selected Minor**

Lake Area (percent of total drainage area)	Storage Area (percent of total drainage area)	Main Channel Length (miles)	Main Channel Slope (foot per mile)
0.8	16.9	46.31	4.5

U.S. Department of the Interior, U.S. Geological Survey, Minnesota District  
 URL: <http://gisdmnspl.cr.usgs.gov/watershed/index.htm>  
 Contact: [sanocki@usgs.gov](mailto:sanocki@usgs.gov)  
 Last Modified: September 19, 2003





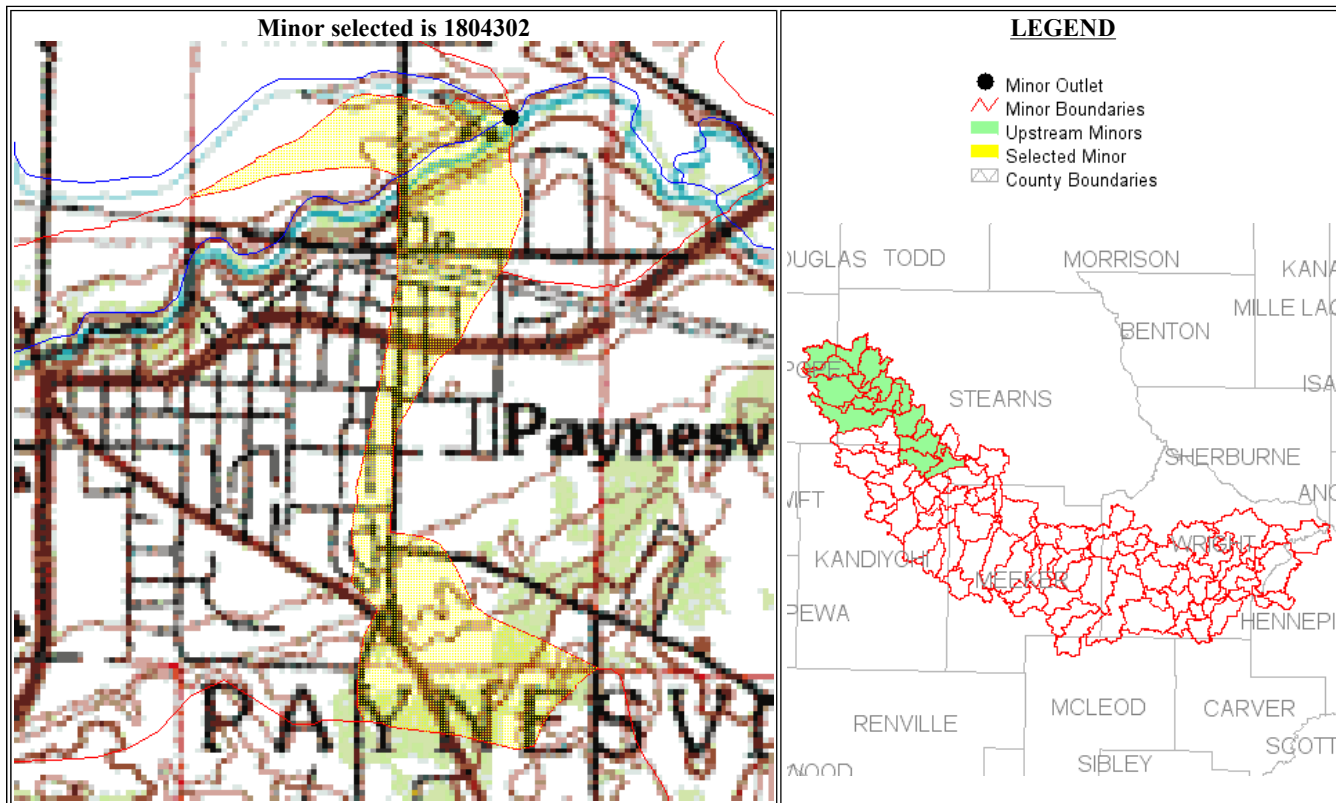
Results from Interactive Minor Web Page

[HOME](#)

[BACK TO MAJOR PAGE](#)

[BACK TO MINOR PAGE](#)

[METADATA](#)



**SELECTED MINOR (Highlighted in Yellow)**

<a href="#">Minor7</a>	<a href="#">Minor outlet description</a>	<a href="#">Outlet location (Township, Range, Section, Quarter, Quarter)</a>	<a href="#">Drainage Area for Selected Minor (Sq. Mi.)</a>	<a href="#">Lake Area (percent of drainage area)</a>	<a href="#">Storage Area (percent of drainage area)</a>
1804302	North Fork Crow River above unnamed tributary(County Ditch No. 5)	NE SE 09 122N 32W	0.41	0.0	2.7

**Cummulative Drainage Area Totals to Outlet of Selected Minor**

<a href="#">Drainage Area of Selected Minor (Sq. Mi.)</a>	<a href="#">Drainage Area of Upstream Minor/s (Sq. Mi.)</a>	<a href="#">Drainage Area of Upstream Major/s (Sq. Mi.)</a>	<a href="#">Total Drainage Area to the Outlet of the Selected Minor (Sq. Mi.)</a>
0.41	243.15	0	243.56

**Other Physical Characteristic Totals to Outlet of Selected Minor**

<a href="#">Lake Area (percent of total drainage area)</a>	<a href="#">Storage Area (percent of total drainage area)</a>	<a href="#">Main Channel Length (miles)</a>	<a href="#">Main Channel Slope (foot per mile)</a>
0.8	16.9	47.43	4.6

U.S. Department of the Interior, U.S. Geological Survey, Minnesota District  
 URL: <http://gisdmspl.cr.usgs.gov/watershed/index.htm>  
 Contact: [sanocki@usgs.gov](mailto:sanocki@usgs.gov)  
 Last Modified: September 19, 2003





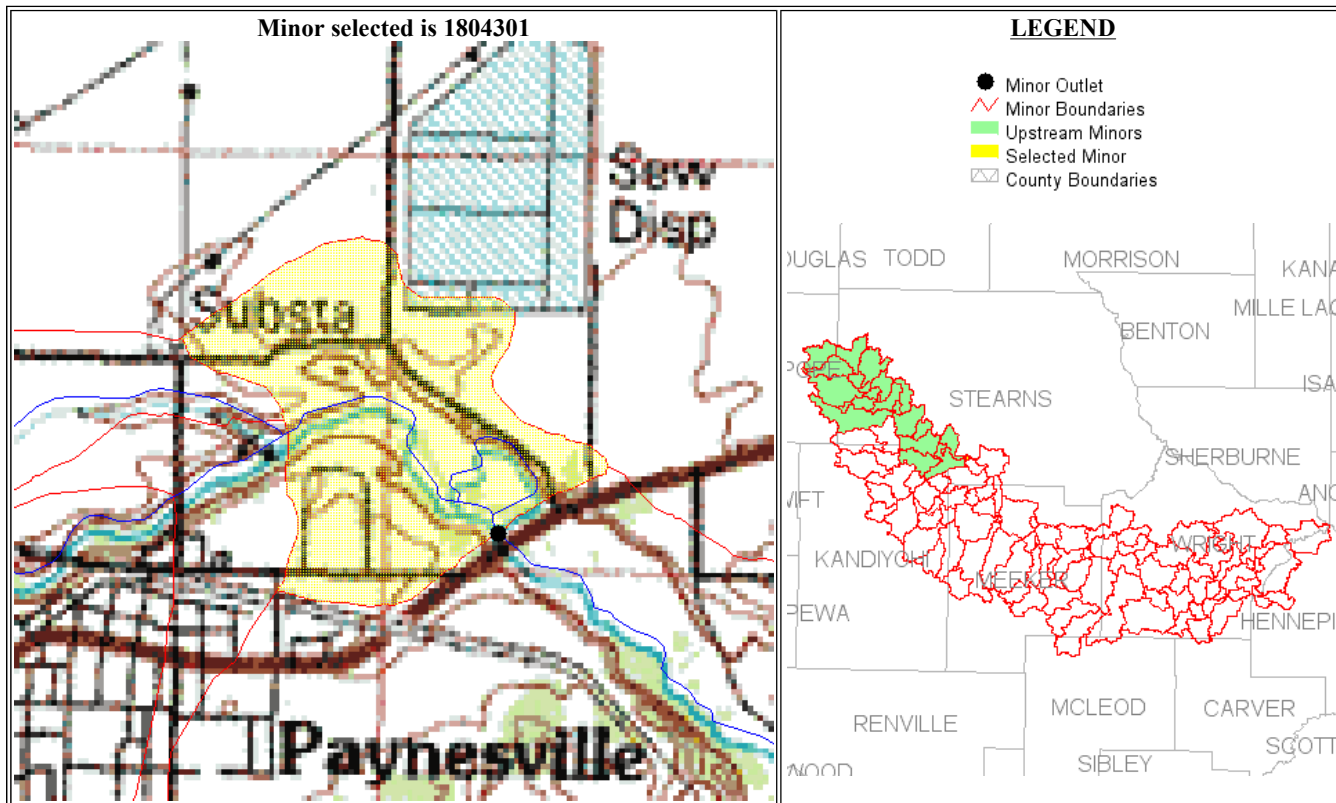
### Results from Interactive Minor Web Page

[HOME](#)

[BACK TO MAJOR PAGE](#)

[BACK TO MINOR PAGE](#)

[METADATA](#)



**SELECTED MINOR (Highlighted in Yellow)**

<a href="#">Minor7</a>	<a href="#">Minor outlet description</a>	<a href="#">Outlet location (Township, Range, Section, Quarter, Quarter)</a>	<a href="#">Drainage Area for Selected Minor (Sq. Mi.)</a>	<a href="#">Lake Area (percent of drainage area)</a>	<a href="#">Storage Area (percent of drainage area)</a>
1804301	North Fork Crow River above gaging station at Paynesville: station number is 05276210	SE SW 10 122N 32W	0.47	0.2	10.4

**Cummulative Drainage Area Totals to Outlet of Selected Minor**

<a href="#">Drainage Area of Selected Minor (Sq. Mi.)</a>	<a href="#">Drainage Area of Upstream Minor/s (Sq. Mi.)</a>	<a href="#">Drainage Area of Upstream Major/s (Sq. Mi.)</a>	<a href="#">Total Drainage Area to the Outlet of the Selected Minor (Sq. Mi.)</a>
0.47	253.23	0	253.7

**Other Physical Characteristic Totals to Outlet of Selected Minor**

<a href="#">Lake Area (percent of total drainage area)</a>	<a href="#">Storage Area (percent of total drainage area)</a>	<a href="#">Main Channel Length (miles)</a>	<a href="#">Main Channel Slope (foot per mile)</a>
0.8	16.6	47.43	4.6

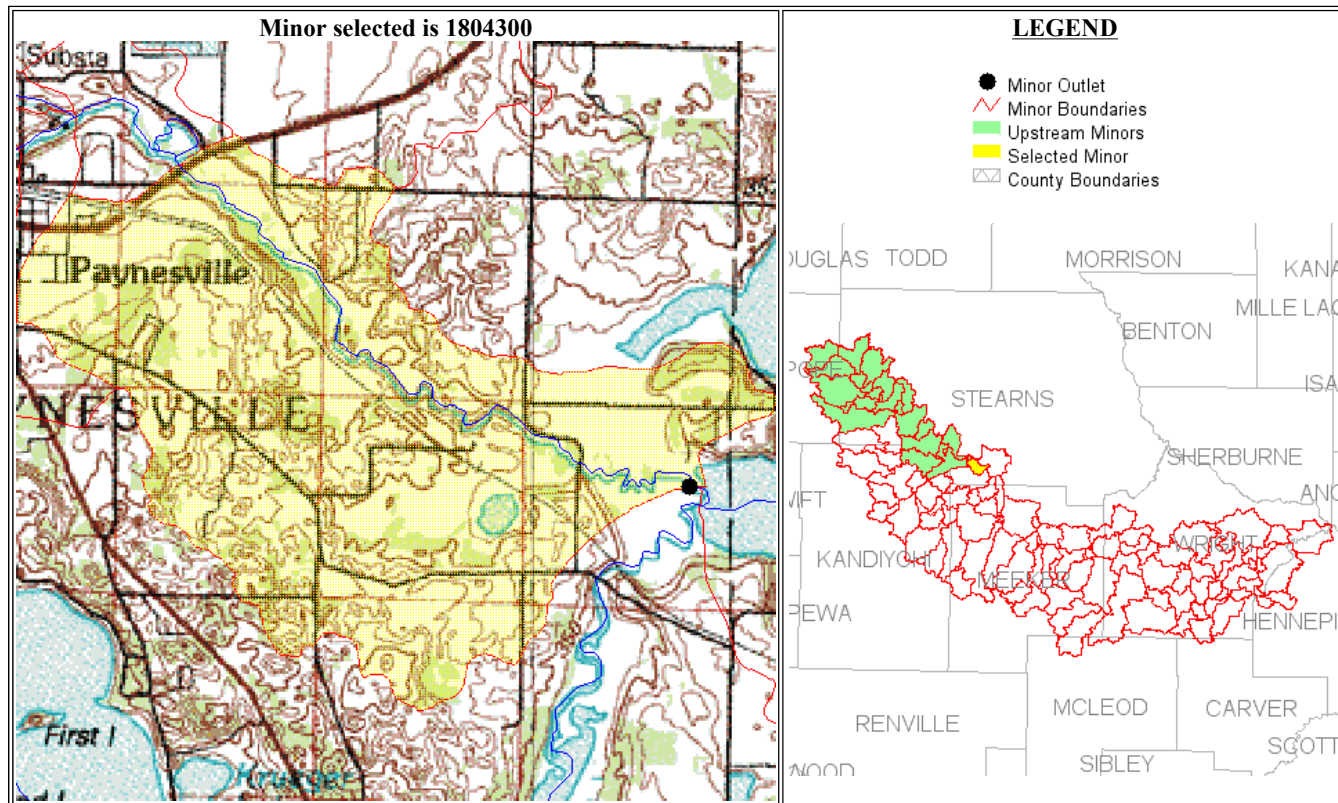
U.S. Department of the Interior, U.S. Geological Survey, Minnesota District  
 URL: <http://gisdmspl.cr.usgs.gov/watershed/index.htm>  
 Contact: [sanocki@usgs.gov](mailto:sanocki@usgs.gov)  
 Last Modified: September 19, 2003





Results from Interactive Minor Web Page

[HOME](#)
[BACK TO MAJOR PAGE](#)
[BACK TO MINOR PAGE](#)
[METADATA](#)



**SELECTED MINOR (Highlighted in Yellow)**

Minor7	Minor outlet description	Outlet location (Township, Range, Section, Quarter, Quarter)	Drainage Area for Selected Minor (Sq. Mi.)	Lake Area (percent of drainage area)	Storage Area (percent of drainage area)
1804300	North Fork Crow River to Rice Lake	SE NE 24 122N 32W	4.93	0.0	23.7

**Cummulative Drainage Area Totals to Outlet of Selected Minor**

Drainage Area of Selected Minor (Sq. Mi.)	Drainage Area of Upstream Minor/s (Sq. Mi.)	Drainage Area of Upstream Major/s (Sq. Mi.)	Total Drainage Area to the Outlet of the Selected Minor (Sq. Mi.)
4.93	253.7	0	258.63

**Other Physical Characteristic Totals to Outlet of Selected Minor**

Lake Area (percent of total drainage area)	Storage Area (percent of total drainage area)	Main Channel Length (miles)	Main Channel Slope (foot per mile)
0.8	16.8	51.58	4.8

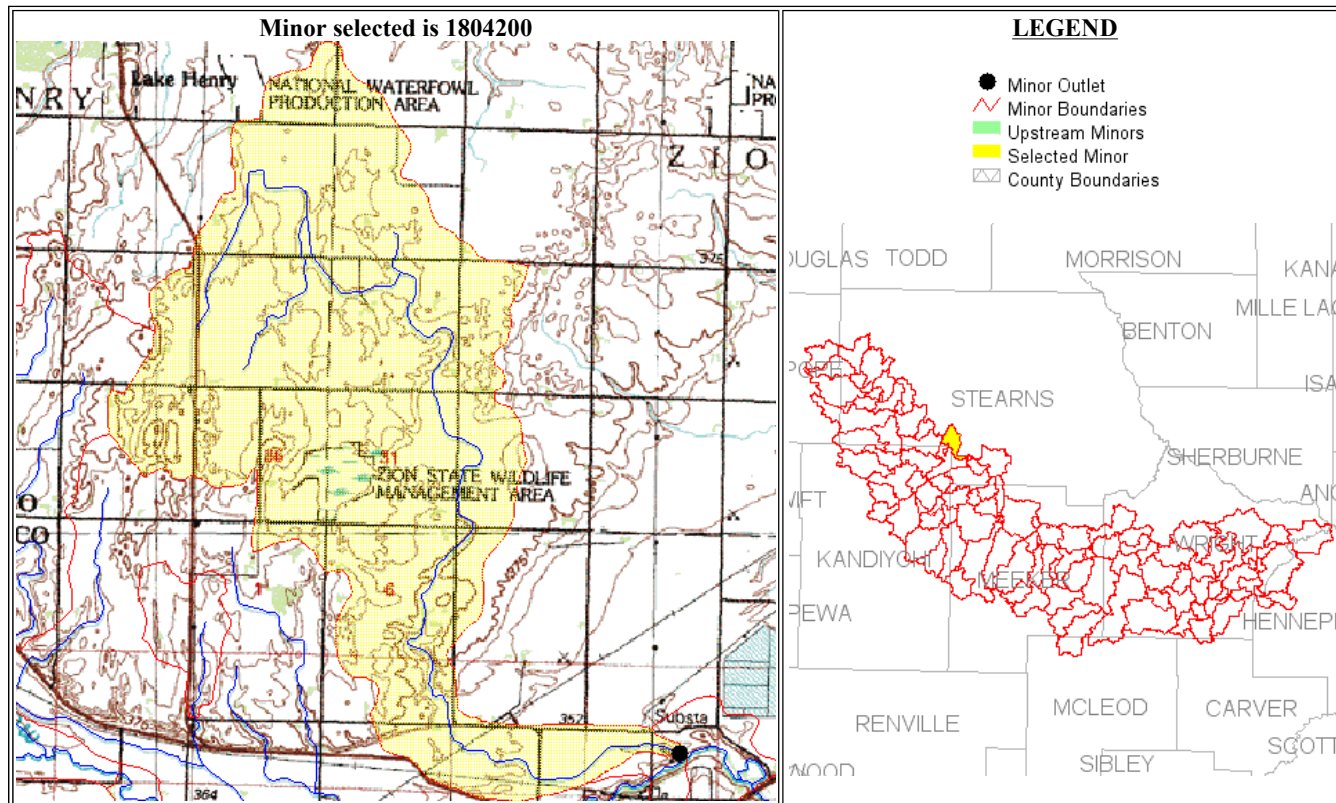
U.S. Department of the Interior, U.S. Geological Survey, Minnesota District  
 URL: <http://gisdmnspl.cr.usgs.gov/watershed/index.htm>  
 Contact: [sanocki@usgs.gov](mailto:sanocki@usgs.gov)  
 Last Modified: September 19, 2003





Results from Interactive Minor Web Page

- HOME
- BACK TO MAJOR PAGE
- BACK TO MINOR PAGE
- METADATA



**SELECTED MINOR (Highlighted in Yellow)**

Minor7	Minor outlet description	Outlet location (Township, Range, Section, Quarter, Quarter)	Drainage Area for Selected Minor (Sq. Mi.)	Lake Area (percent of drainage area)	Storage Area (percent of drainage area)
1804200	Unnamed tributary (County Ditch No. 5) to North Fork Crow River	NE SE 09 122N 32W	9.67	0.0	11.2

**Cummulative Drainage Area Totals to Outlet of Selected Minor**

Drainage Area of Selected Minor (Sq. Mi.)	Drainage Area of Upstream Minor/s (Sq. Mi.)	Drainage Area of Upstream Major/s (Sq. Mi.)	Total Drainage Area to the Outlet of the Selected Minor (Sq. Mi.)
9.67	0	0	9.67

**Other Physical Characteristic Totals to Outlet of Selected Minor**

Lake Area (percent of total drainage area)	Storage Area (percent of total drainage area)	Main Channel Length (miles)	Main Channel Slope (foot per mile)
0.0	11.2	11.27	12.7

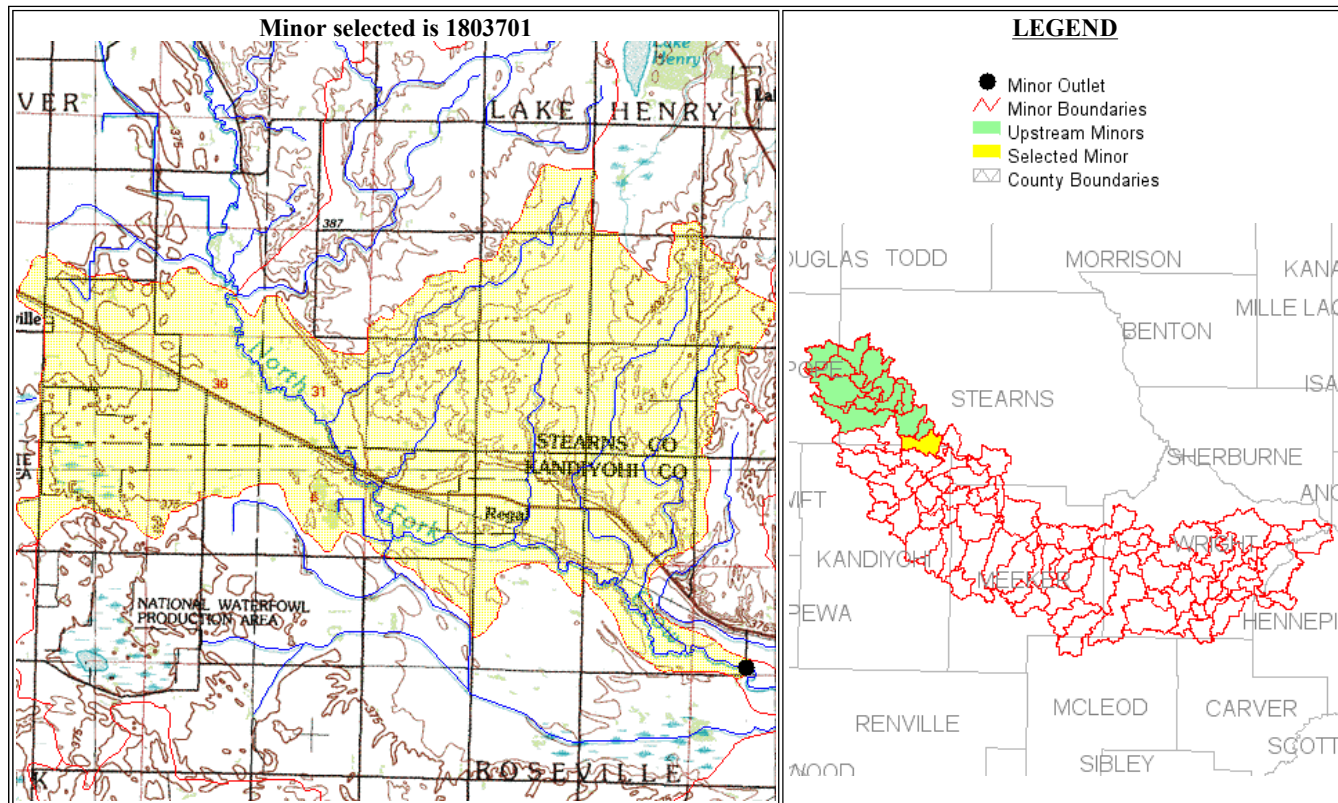
U.S. Department of the Interior, U.S. Geological Survey, Minnesota District  
 URL: <http://gisdmnsp1.cr.usgs.gov/watershed/index.htm>  
 Contact: [sanocki@usgs.gov](mailto:sanocki@usgs.gov)  
 Last Modified: September 19, 2003





### Results from Interactive Minor Web Page

- HOME**
- BACK TO MAJOR PAGE**
- BACK TO MINOR PAGE**
- METADATA**



**SELECTED MINOR (Highlighted in Yellow)**

Minor7	Minor outlet description	Outlet location (Township, Range, Section, Quarter, Quarter)	Drainage Area for Selected Minor (Sq. Mi.)	Lake Area (percent of drainage area)	Storage Area (percent of drainage area)
1803701	North Fork Crow River above gaging station near Regal: station number is 05276000	SE SW 11 122N 33W	16.55	0.0	22.7

**Cummulative Drainage Area Totals to Outlet of Selected Minor**

Drainage Area of Selected Minor (Sq. Mi.)	Drainage Area of Upstream Minor/s (Sq. Mi.)	Drainage Area of Upstream Major/s (Sq. Mi.)	Total Drainage Area to the Outlet of the Selected Minor (Sq. Mi.)
16.55	196.34	0	212.89000000000001

**Other Physical Characteristic Totals to Outlet of Selected Minor**

Lake Area (percent of total drainage area)	Storage Area (percent of total drainage area)	Main Channel Length (miles)	Main Channel Slope (foot per mile)
0.9	16.8	39.90	4.2

U.S. Department of the Interior, U.S. Geological Survey, Minnesota District  
 URL: <http://gisdmnspl.cr.usgs.gov/watershed/index.htm>  
 Contact: [sanocki@usgs.gov](mailto:sanocki@usgs.gov)  
 Last Modified: September 19, 2003





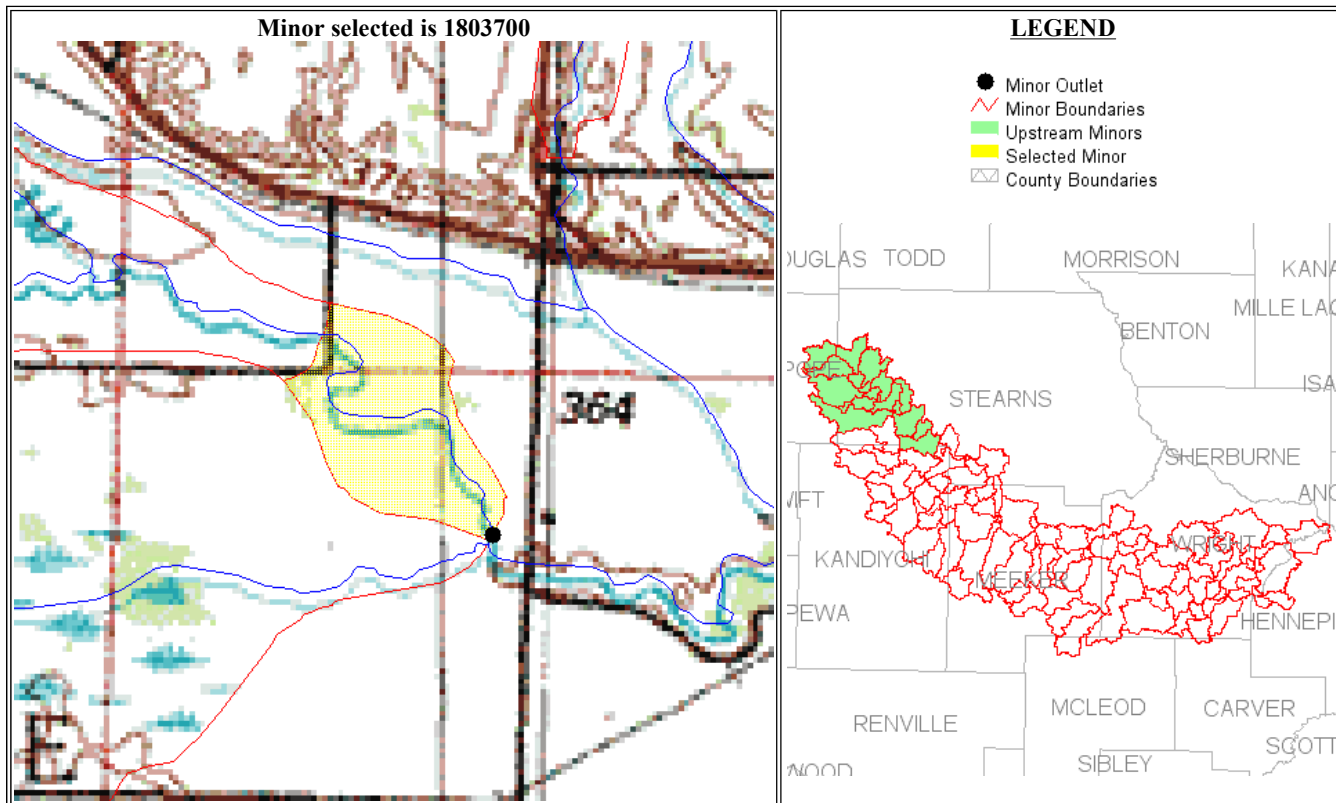
### Results from Interactive Minor Web Page

[HOME](#)

[BACK TO MAJOR PAGE](#)

[BACK TO MINOR PAGE](#)

[METADATA](#)



**SELECTED MINOR (Highlighted in Yellow)**

<a href="#">Minor7</a>	<a href="#">Minor outlet description</a>	<a href="#">Outlet location (Township, Range, Section, Quarter, Quarter)</a>	<a href="#">Drainage Area for Selected Minor (Sq. Mi.)</a>	<a href="#">Lake Area (percent of drainage area)</a>	<a href="#">Storage Area (percent of drainage area)</a>
1803700	North Fork Crow River above unnamed tributary subbasin 1803600	SE NE 14 122N 33W	0.17	0.0	34.4

**Cummulative Drainage Area Totals to Outlet of Selected Minor**

<a href="#">Drainage Area of Selected Minor (Sq. Mi.)</a>	<a href="#">Drainage Area of Upstream Minor/s (Sq. Mi.)</a>	<a href="#">Drainage Area of Upstream Major/s (Sq. Mi.)</a>	<a href="#">Total Drainage Area to the Outlet of the Selected Minor (Sq. Mi.)</a>
0.17	212.89	0	213.05999999999997

**Other Physical Characteristic Totals to Outlet of Selected Minor**

<a href="#">Lake Area (percent of total drainage area)</a>	<a href="#">Storage Area (percent of total drainage area)</a>	<a href="#">Main Channel Length (miles)</a>	<a href="#">Main Channel Slope (foot per mile)</a>
0.9	16.8	40.84	4.1

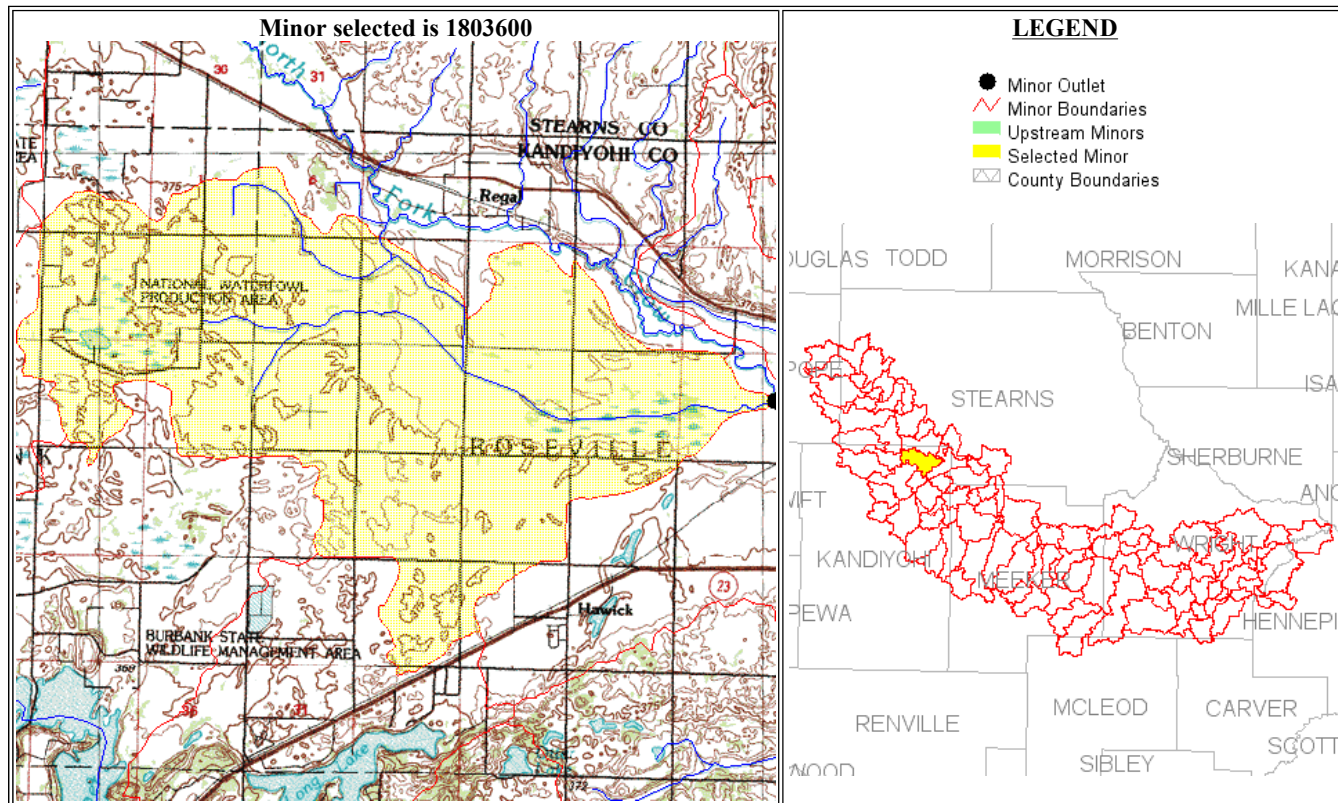
U.S. Department of the Interior, U.S. Geological Survey, Minnesota District  
 URL: <http://gisdmspl.cr.usgs.gov/watershed/index.htm>  
 Contact: [sanocki@usgs.gov](mailto:sanocki@usgs.gov)  
 Last Modified: September 19, 2003





### Results from Interactive Minor Web Page

[HOME](#)
[BACK TO MAJOR PAGE](#)
[BACK TO MINOR PAGE](#)
[METADATA](#)



**SELECTED MINOR (Highlighted in Yellow)**

Minor7	Minor outlet description	Outlet location (Township, Range, Section, Quarter, Quarter)	Drainage Area for Selected Minor (Sq. Mi.)	Lake Area (percent of drainage area)	Storage Area (percent of drainage area)
1803600	Unnamed tributary to North Fork Crow River	SE NE 14 122N 33W	15.58	0.1	22.5

**Cummulative Drainage Area Totals to Outlet of Selected Minor**

Drainage Area of Selected Minor (Sq. Mi.)	Drainage Area of Upstream Minor/s (Sq. Mi.)	Drainage Area of Upstream Major/s (Sq. Mi.)	Total Drainage Area to the Outlet of the Selected Minor (Sq. Mi.)
15.58	0	0	15.58

**Other Physical Characteristic Totals to Outlet of Selected Minor**

Lake Area (percent of total drainage area)	Storage Area (percent of total drainage area)	Main Channel Length (miles)	Main Channel Slope (foot per mile)
0.1	22.5	8.58	5.8

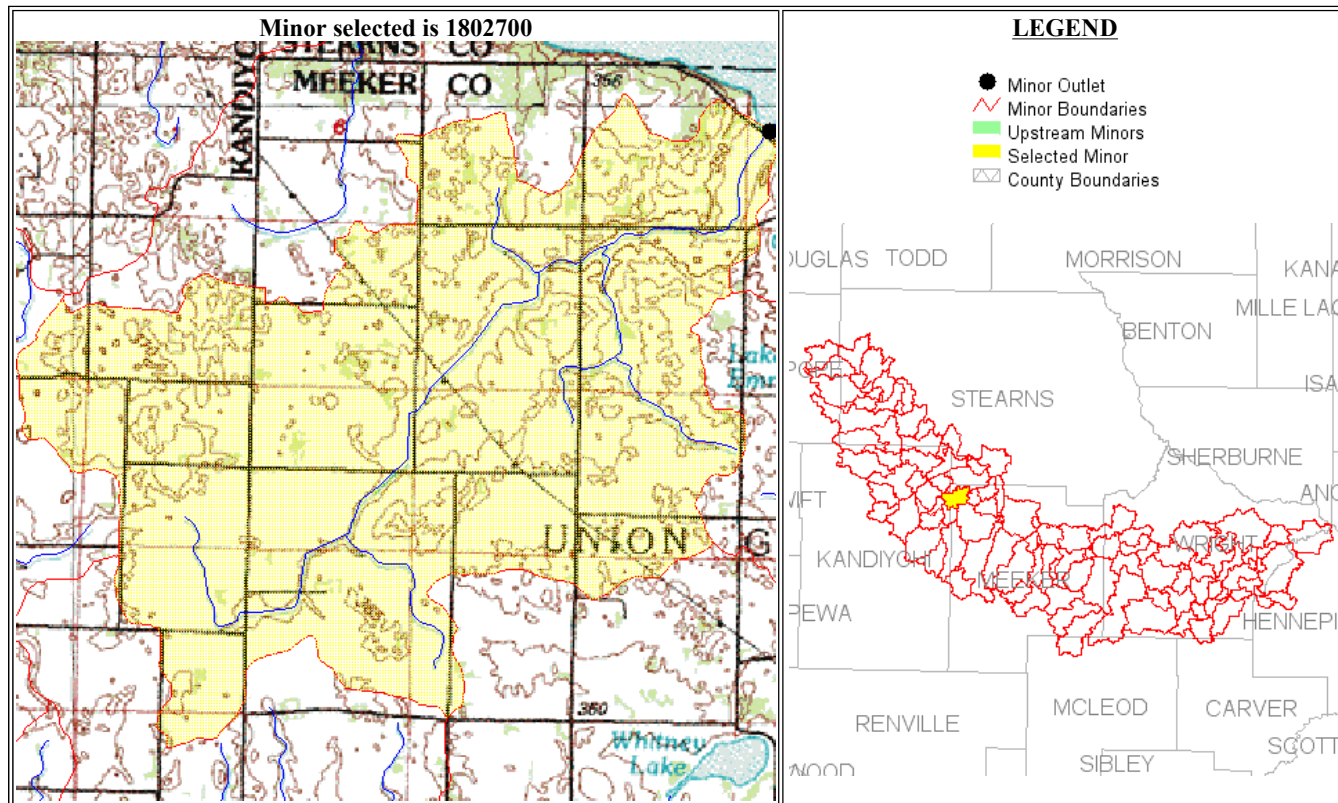
U.S. Department of the Interior, U.S. Geological Survey, Minnesota District  
 URL: <http://gisdmnspl.cr.usgs.gov/watershed/index.htm>  
 Contact: [sanocki@usgs.gov](mailto:sanocki@usgs.gov)  
 Last Modified: September 19, 2003





Results from Interactive Minor Web Page

- HOME
- BACK TO MAJOR PAGE
- BACK TO MINOR PAGE
- METADATA



**SELECTED MINOR (Highlighted in Yellow)**

<a href="#">Minor7</a>	<a href="#">Minor outlet description</a>	<a href="#">Outlet location (Township, Range, Section, Quarter, Quarter)</a>	<a href="#">Drainage Area for Selected Minor (Sq. Mi.)</a>	<a href="#">Lake Area (percent of drainage area)</a>	<a href="#">Storage Area (percent of drainage area)</a>
1802700	Unnamed tributary to Lake Koronis	SW NW 03 121N 32W	10.25	0.0	17.8

**Cummulative Drainage Area Totals to Outlet of Selected Minor**

<a href="#">Drainage Area of Selected Minor (Sq. Mi.)</a>	<a href="#">Drainage Area of Upstream Minor/s (Sq. Mi.)</a>	<a href="#">Drainage Area of Upstream Major/s (Sq. Mi.)</a>	<a href="#">Total Drainage Area to the Outlet of the Selected Minor (Sq. Mi.)</a>
10.25	0	0	10.25

**Other Physical Characteristic Totals to Outlet of Selected Minor**

<a href="#">Lake Area (percent of total drainage area)</a>	<a href="#">Storage Area (percent of total drainage area)</a>	<a href="#">Main Channel Length (miles)</a>	<a href="#">Main Channel Slope (foot per mile)</a>
0.0	17.8	7.76	12.3

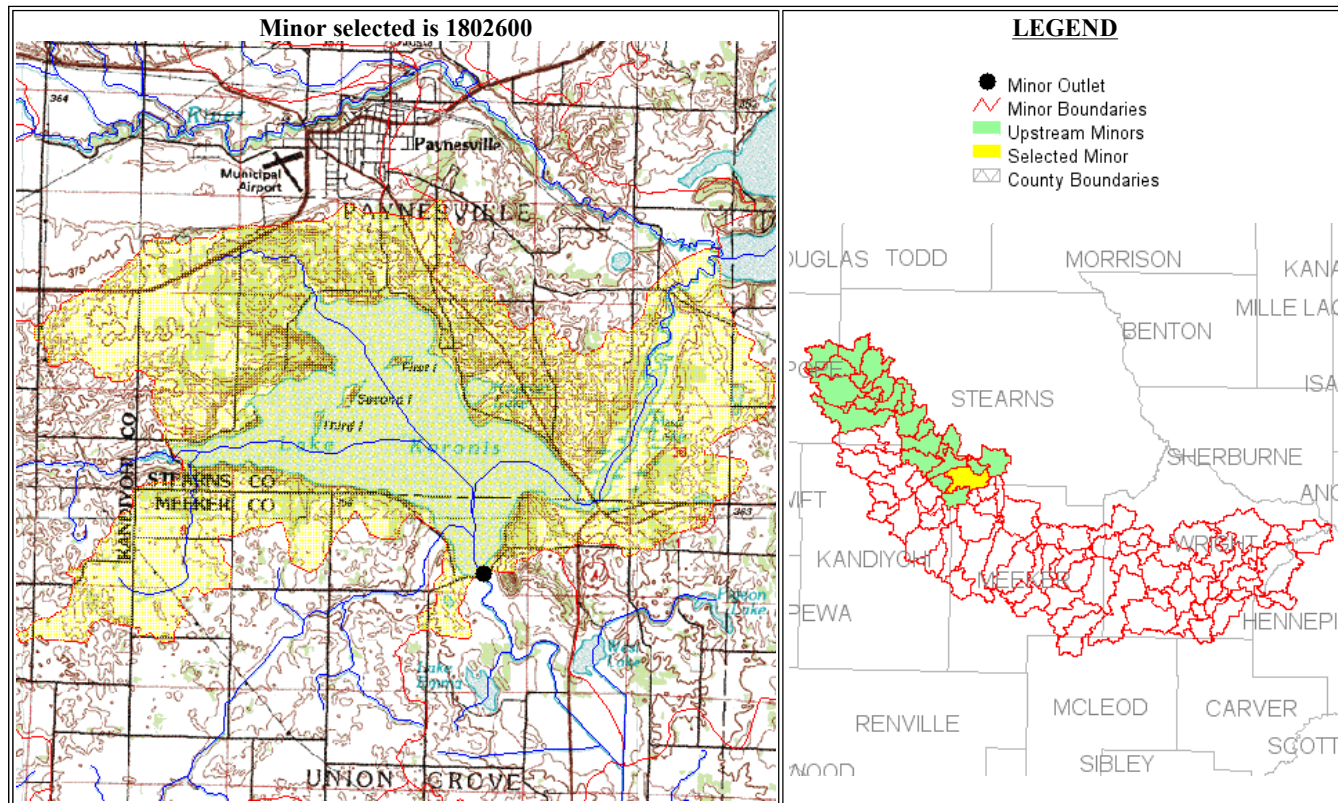
U.S. Department of the Interior, U.S. Geological Survey, Minnesota District  
 URL: <http://gisdmnspl.cr.usgs.gov/watershed/index.htm>  
 Contact: [sanocki@usgs.gov](mailto:sanocki@usgs.gov)  
 Last Modified: September 19, 2003





Results from Interactive Minor Web Page

[HOME](#)
[BACK TO MAJOR PAGE](#)
[BACK TO MINOR PAGE](#)
[METADATA](#)



**SELECTED MINOR (Highlighted in Yellow)**

Minor7	Minor outlet description	Outlet location (Township, Range, Section, Quarter, Quarter)	Drainage Area for Selected Minor (Sq. Mi.)	Lake Area (percent of drainage area)	Storage Area (percent of drainage area)
1802600	Koronis Lake outlet above gaging station near Paynesville: station number is 05276300	SW SE 03 121N 32W	19.48	24.9	36.2

**Cummulative Drainage Area Totals to Outlet of Selected Minor**

Drainage Area of Selected Minor (Sq. Mi.)	Drainage Area of Upstream Minor/s (Sq. Mi.)	Drainage Area of Upstream Major/s (Sq. Mi.)	Total Drainage Area to the Outlet of the Selected Minor (Sq. Mi.)
19.48	291.84	0	311.32

**Other Physical Characteristic Totals to Outlet of Selected Minor**

Lake Area (percent of total drainage area)	Storage Area (percent of total drainage area)	Main Channel Length (miles)	Main Channel Slope (foot per mile)
3.0	18.5	57.27	4.5

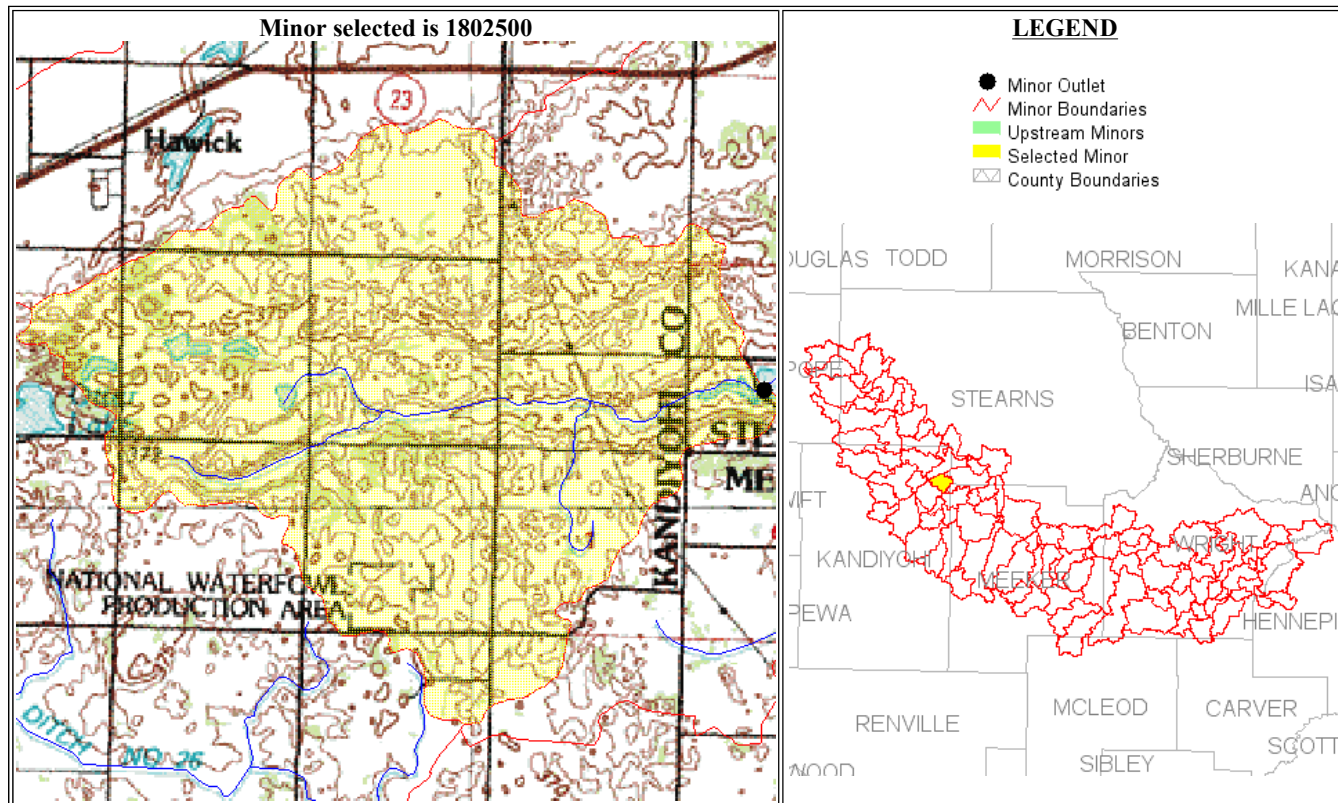
U.S. Department of the Interior, U.S. Geological Survey, Minnesota District  
 URL: <http://gisdmnspl.cr.usgs.gov/watershed/index.htm>  
 Contact: [sanocki@usgs.gov](mailto:sanocki@usgs.gov)  
 Last Modified: September 19, 2003





Results from Interactive Minor Web Page

- HOME
- BACK TO MAJOR PAGE
- BACK TO MINOR PAGE
- METADATA



**SELECTED MINOR (Highlighted in Yellow)**

Minor7	Minor outlet description	Outlet location (Township, Range, Section, Quarter, Quarter)	Drainage Area for Selected Minor (Sq. Mi.)	Lake Area (percent of drainage area)	Storage Area (percent of drainage area)
1802500	Unnamed tributary to Lake Koronis	NE SW 31 122N 32W	6.88	0.0	16.7

**Cummulative Drainage Area Totals to Outlet of Selected Minor**

Drainage Area of Selected Minor (Sq. Mi.)	Drainage Area of Upstream Minor/s (Sq. Mi.)	Drainage Area of Upstream Major/s (Sq. Mi.)	Total Drainage Area to the Outlet of the Selected Minor (Sq. Mi.)
6.88	0	0	6.88

**Other Physical Characteristic Totals to Outlet of Selected Minor**

Lake Area (percent of total drainage area)	Storage Area (percent of total drainage area)	Main Channel Length (miles)	Main Channel Slope (foot per mile)
0.0	16.7	4.48	25.0

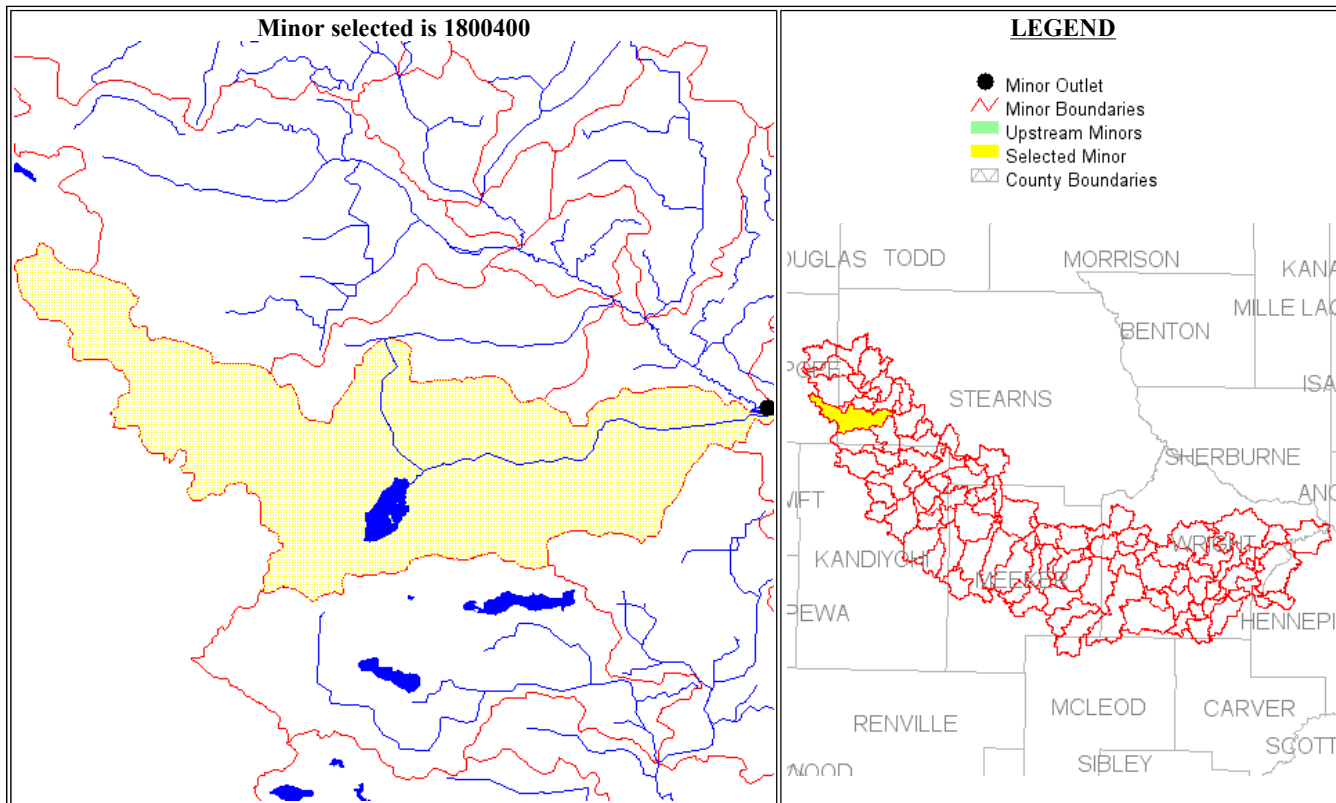
U.S. Department of the Interior, U.S. Geological Survey, Minnesota District  
 URL: <http://gisdmnspl.cr.usgs.gov/watershed/index.htm>  
 Contact: [sanocki@usgs.gov](mailto:sanocki@usgs.gov)  
 Last Modified: September 19, 2003





### Results from Interactive Minor Web Page

- HOME**
- BACK TO MAJOR PAGE**
- BACK TO MINOR PAGE**
- METADATA**



**SELECTED MINOR (Highlighted in Yellow)**

<a href="#">Minor7</a>	<a href="#">Minor outlet description</a>	<a href="#">Outlet location (Township, Range, Section, Quarter, Quarter)</a>	<a href="#">Drainage Area for Selected Minor (Sq. Mi.)</a>	<a href="#">Lake Area (percent of drainage area)</a>	<a href="#">Storage Area (percent of drainage area)</a>
1800400	Skunk River (County Ditch No. 29) to North Fork Crow River	NW SW 03 123N 34W	33.33	1.2	20.8

**Cummulative Drainage Area Totals to Outlet of Selected Minor**

<a href="#">Drainage Area of Selected Minor (Sq. Mi.)</a>	<a href="#">Drainage Area of Upstream Minor/s (Sq. Mi.)</a>	<a href="#">Drainage Area of Upstream Major/s (Sq. Mi.)</a>	<a href="#">Total Drainage Area to the Outlet of the Selected Minor (Sq. Mi.)</a>
33.33	0	0	33.33

**Other Physical Characteristic Totals to Outlet of Selected Minor**

<a href="#">Lake Area (percent of total drainage area)</a>	<a href="#">Storage Area (percent of total drainage area)</a>	<a href="#">Main Channel Length (miles)</a>	<a href="#">Main Channel Slope (foot per mile)</a>
1.2	20.8	18.61	5.0

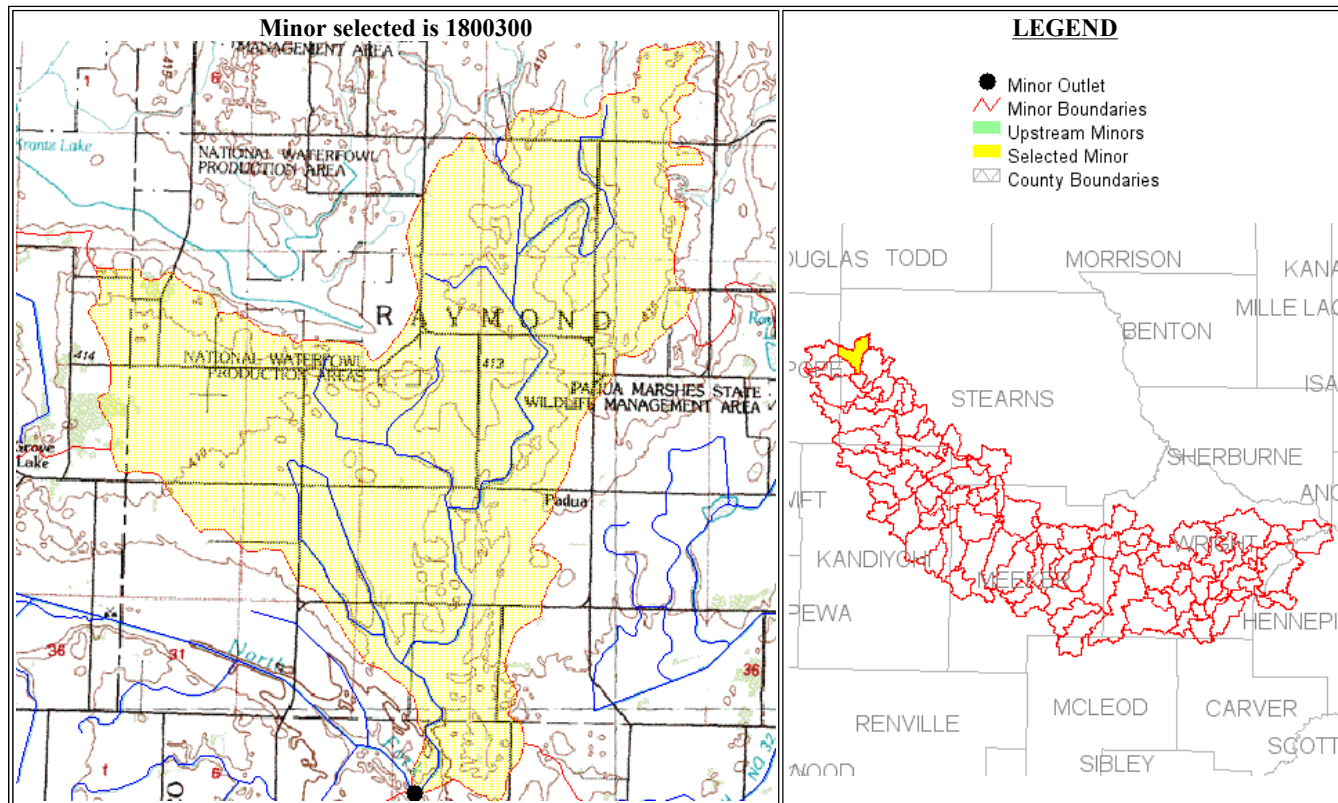
U.S. Department of the Interior, U.S. Geological Survey, Minnesota District  
 URL: <http://gisdmnsp1.cr.usgs.gov/watershed/index.htm>  
 Contact: [sanocki@usgs.gov](mailto:sanocki@usgs.gov)  
 Last Modified: September 19, 2003





### Results from Interactive Minor Web Page

- HOME**
- BACK TO MAJOR PAGE**
- BACK TO MINOR PAGE**
- METADATA**



**SELECTED MINOR (Highlighted in Yellow)**

<a href="#">Minor7</a>	<a href="#">Minor outlet description</a>	<a href="#">Outlet location (Township, Range, Section, Quarter, Quarter)</a>	<a href="#">Drainage Area for Selected Minor (Sq. Mi.)</a>	<a href="#">Lake Area (percent of drainage area)</a>	<a href="#">Storage Area (percent of drainage area)</a>
1800300	Judicial Ditch No.1 to North Fork Crow River	NW SW 04 124N 35W	14.61	0.0	11.1

**Cummulative Drainage Area Totals to Outlet of Selected Minor**

<a href="#">Drainage Area of Selected Minor (Sq. Mi.)</a>	<a href="#">Drainage Area of Upstream Minor/s (Sq. Mi.)</a>	<a href="#">Drainage Area of Upstream Major/s (Sq. Mi.)</a>	<a href="#">Total Drainage Area to the Outlet of the Selected Minor (Sq. Mi.)</a>
14.61	0	0	14.61

**Other Physical Characteristic Totals to Outlet of Selected Minor**

<a href="#">Lake Area (percent of total drainage area)</a>	<a href="#">Storage Area (percent of total drainage area)</a>	<a href="#">Main Channel Length (miles)</a>	<a href="#">Main Channel Slope (foot per mile)</a>
0.0	11.1	9.82	5.9

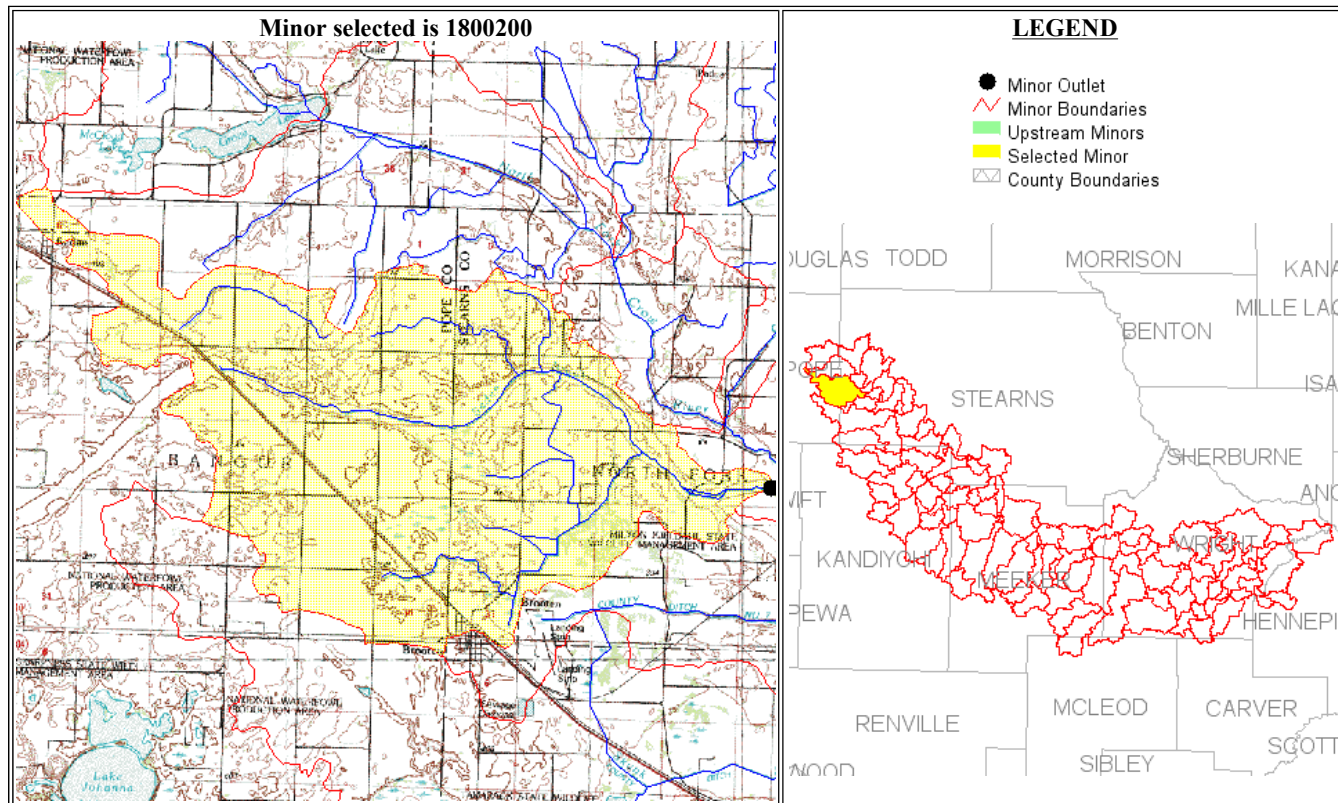
U.S. Department of the Interior, U.S. Geological Survey, Minnesota District  
 URL: <http://gisdmnspl.cr.usgs.gov/watershed/index.htm>  
 Contact: [sanocki@usgs.gov](mailto:sanocki@usgs.gov)  
 Last Modified: September 19, 2003





Results from Interactive Minor Web Page

- HOME**
- BACK TO MAJOR PAGE**
- BACK TO MINOR PAGE**
- METADATA**



**SELECTED MINOR (Highlighted in Yellow)**

<a href="#">Minor7</a>	<a href="#">Minor outlet description</a>	<a href="#">Outlet location (Township, Range, Section, Quarter)</a>	<a href="#">Drainage Area for Selected Minor (Sq. Mi.)</a>	<a href="#">Lake Area (percent of drainage area)</a>	<a href="#">Storage Area (percent of drainage area)</a>
1800200	Sedan Brook to North Fork Crow River	SE SW 23 124N 35W	29.01	0.0	19.2

**Cummulative Drainage Area Totals to Outlet of Selected Minor**

<a href="#">Drainage Area of Selected Minor (Sq. Mi.)</a>	<a href="#">Drainage Area of Upstream Minor/s (Sq. Mi.)</a>	<a href="#">Drainage Area of Upstream Major/s (Sq. Mi.)</a>	<a href="#">Total Drainage Area to the Outlet of the Selected Minor (Sq. Mi.)</a>
29.01	0	0	29.01

**Other Physical Characteristic Totals to Outlet of Selected Minor**

<a href="#">Lake Area (percent of total drainage area)</a>	<a href="#">Storage Area (percent of total drainage area)</a>	<a href="#">Main Channel Length (miles)</a>	<a href="#">Main Channel Slope (foot per mile)</a>
0.0	19.2	12.63	5.3

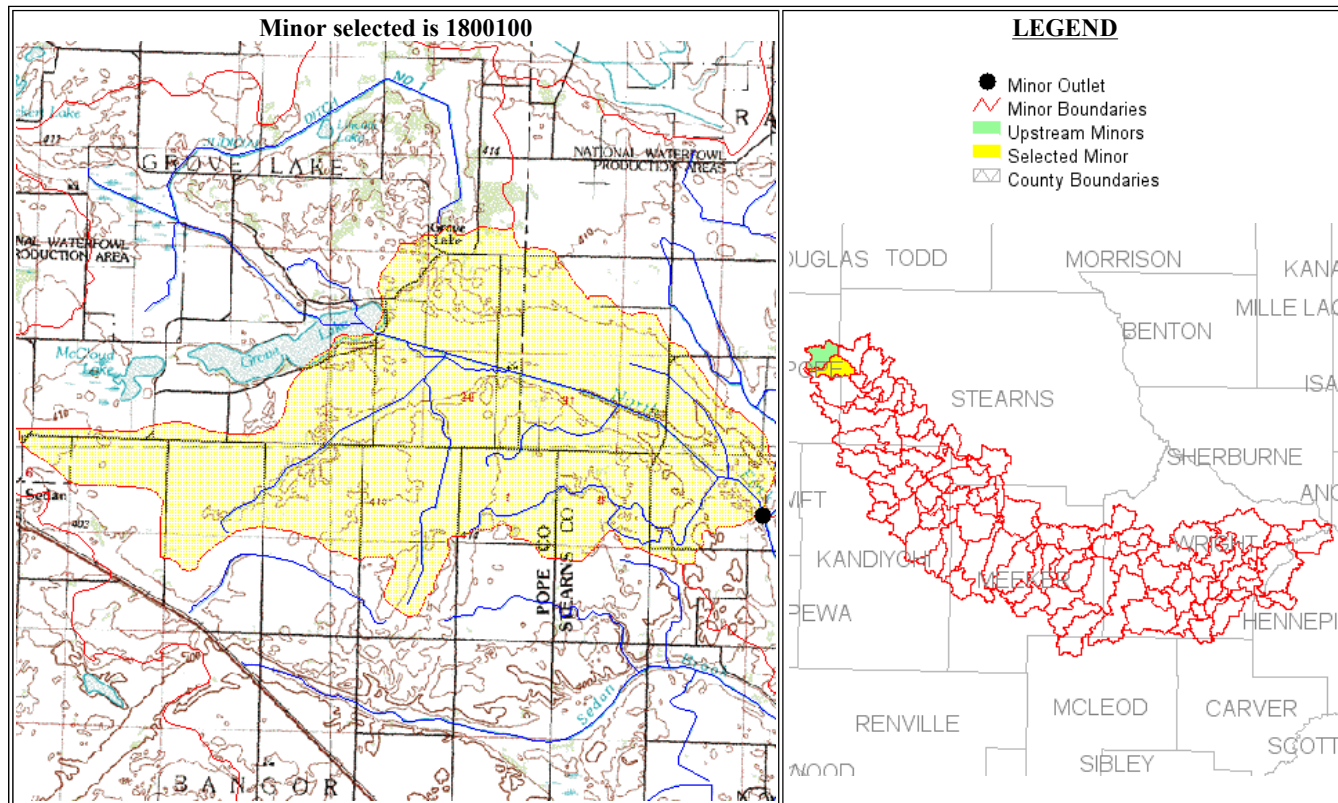
U.S. Department of the Interior, U.S. Geological Survey, Minnesota District  
 URL: <http://gisdmnspl.cr.usgs.gov/watershed/index.htm>  
 Contact: [sanocki@usgs.gov](mailto:sanocki@usgs.gov)  
 Last Modified: September 19, 2003





Results from Interactive Minor Web Page

- HOME**
- BACK TO MAJOR PAGE**
- BACK TO MINOR PAGE**
- METADATA**



**SELECTED MINOR (Highlighted in Yellow)**

<a href="#">Minor7</a>	<a href="#">Minor outlet description</a>	<a href="#">Outlet location (Township, Range, Section, Quarter, Quarter)</a>	<a href="#">Drainage Area for Selected Minor (Sq. Mi.)</a>	<a href="#">Lake Area (percent of drainage area)</a>	<a href="#">Storage Area (percent of drainage area)</a>
1800100	North Fork Crow River above Judicial Ditch No. 1	NW SW 04 124N 35W	14.64	0.1	14.8

**Cummulative Drainage Area Totals to Outlet of Selected Minor**

<a href="#">Drainage Area of Selected Minor (Sq. Mi.)</a>	<a href="#">Drainage Area of Upstream Minor/s (Sq. Mi.)</a>	<a href="#">Drainage Area of Upstream Major/s (Sq. Mi.)</a>	<a href="#">Total Drainage Area to the Outlet of the Selected Minor (Sq. Mi.)</a>
14.64	14.46	0	29.1

**Other Physical Characteristic Totals to Outlet of Selected Minor**

<a href="#">Lake Area (percent of total drainage area)</a>	<a href="#">Storage Area (percent of total drainage area)</a>	<a href="#">Main Channel Length (miles)</a>	<a href="#">Main Channel Slope (foot per mile)</a>
2.5	19.6	12.57	4.1

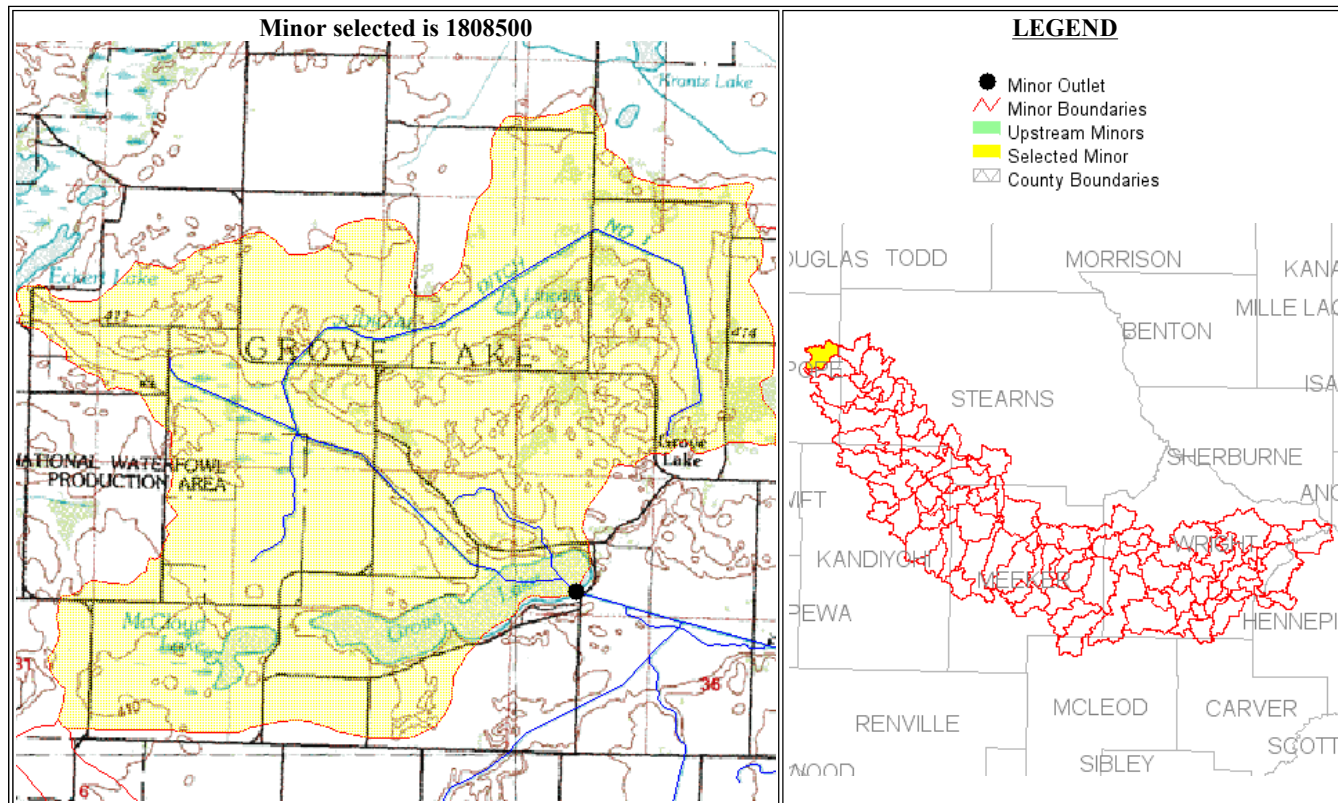
U.S. Department of the Interior, U.S. Geological Survey, Minnesota District  
 URL: <http://gisdmnsp1.cr.usgs.gov/watershed/index.htm>  
 Contact: [sanocki@usgs.gov](mailto:sanocki@usgs.gov)  
 Last Modified: September 19, 2003





Results from Interactive Minor Web Page

[HOME](#)
[BACK TO MAJOR PAGE](#)
[BACK TO MINOR PAGE](#)
[METADATA](#)



**SELECTED MINOR (Highlighted in Yellow)**

Minor7	Minor outlet description	Outlet location (Township, Range, Section, Quarter, Quarter)	Drainage Area for Selected Minor (Sq. Mi.)	Lake Area (percent of drainage area)	Storage Area (percent of drainage area)
1808500	Grove Lake above outlet to North Fork Crow River	SE SW 26 125N 36W	14.46	5.0	24.5

**Cummulative Drainage Area Totals to Outlet of Selected Minor**

Drainage Area of Selected Minor (Sq. Mi.)	Drainage Area of Upstream Minor/s (Sq. Mi.)	Drainage Area of Upstream Major/s (Sq. Mi.)	Total Drainage Area to the Outlet of the Selected Minor (Sq. Mi.)
14.46	0	0	14.46

**Other Physical Characteristic Totals to Outlet of Selected Minor**

Lake Area (percent of total drainage area)	Storage Area (percent of total drainage area)	Main Channel Length (miles)	Main Channel Slope (foot per mile)
5.0	24.5	7.95	2.2

U.S. Department of the Interior, U.S. Geological Survey, Minnesota District  
 URL: <http://gisdmnspl.cr.usgs.gov/watershed/index.htm>  
 Contact: [sanocki@usgs.gov](mailto:sanocki@usgs.gov)  
 Last Modified: September 19, 2003

